

CONSORZIO BONIFICA DI PAESTUM

REGOLARIZZAZIONE CONFLUENZA FIUMI SELE-CALORE LUCANO- ADEGUAMENTO E SISTEMAZIONE DEGLI ARGINI ESISTENTI DEL FIUME SELE

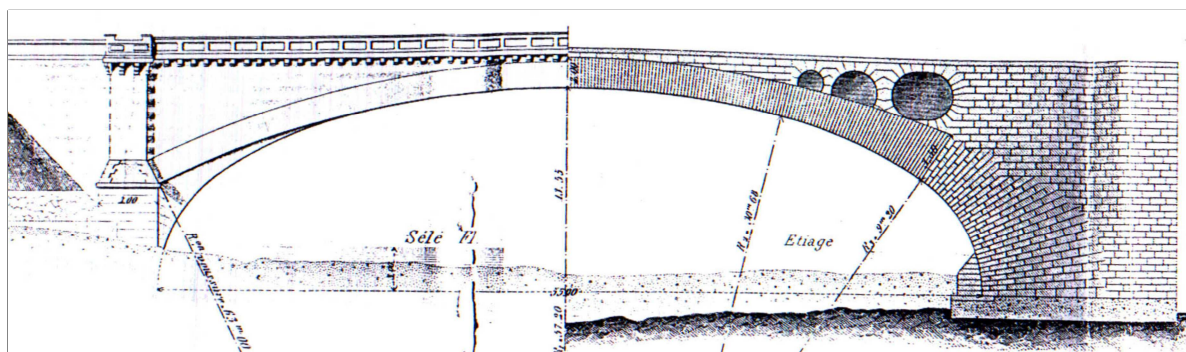
PROTOCOLLO DI INTESA

CONSORZIO DI BONIFICA E COMUNE DI CAPACCIO PAESTUM

PROGETTO DEFINITIVO

(Lavori di completamento)

(Adeguate agli esiti della Conferenza dei Servizi)



TAV.		SCALA
C1	Relazione Geotecnica Integrativa	

PROGETTAZIONE A CURA
DELL'AREA TECNICA DEL
CONSORZIO BONIFICA DI PAESTUM

ing. Guido CONTINI
geom. Roberto CHIARELLI

geom. Antonio Del Prete
geom. Angelo Iorio
geom. Pietro Mancino

RESPONSABILE UNICO DEL PROCEDIMENTO

arch. Rodolfo SABELLI

STUDIO IDROLOGICO IDRAULICO E
CONSULENZA PER LA PROGETTAZIONE
ing. Vincenzo NAPOLI

GEOLOGIA
dott. geol. Giuseppe CARRATU'

RELAZIONE VEGETAZIONALE
dott.ssa Roberta CATALDO

INDAGINI GEOGNOSTICHE E
PROVE DI LABORATORIO
PLP GROUP S.r.l.

RILIEVI TOPOGRAFICI
GEO 3 Art S.r.l.

NOVEMBRE 2017

RELAZIONE GEOTECNICA INTEGRATIVA

Verifiche di calcolo integrative - Rif. Nota Regione Campania prot. 0200581 del 17/03/2017

1. PREMESSA

1.1 – Ad integrazione delle elaborazioni di calcolo contenute nell' Elaborato C - "Relazione Geotecnica" del progetto definitivo dei lavori di "Regolarizzazione confluenza fiumi Sele-Calore Lucano- Adeguamento e sistemazione degli argini esistenti del fiume Sele" del Dicembre 2016, di seguito, in ottemperanza a quanto richiesto nella nota della Giunta Regionale della Campania - Dipartimento delle Politiche Territoriali - Direzione Generale per i Lavori pubblici e la Protezione Civile - Unità Operativa Direzionale - Genio Civile di Salerno - prot. 2017 0200581 del 17/03/2017, sono riportate le "verifiche di stabilità locale delle aree (alveo di magra - golena) soggette a movimentazioni di materiale finalizzate alla risagomatura della sezione idrica, considerando successivamente la verifica globale sull' intera sezione idraulica".

1.2 - Le verifiche sono riferite alla "**Sezione a**" di cui alla tavola grafica **G-04.1 - "Sezioni d'alveo di progetto (da sez. "a" a sez. 70)"**, nella quale sono previsti gli scavi di risagomatura dell' alveo più significativi e che presenta la minore distanza tra gli scavi di risagomatura stessi e l' argine in destra da sovralzare fino a quota 10.95 m s.l.m. (v. Figura n. 40 che segue).

Con riferimento alle caratteristiche geotecniche dei terreni, alle condizioni sismiche delle are ed alle procedure di calcolo riportate nella sopra richiamata "Relazione geotecnica", sono state effettuate le seguenti verifiche integrative:

<i>Numero</i>	<i>Tipo di verifica</i>	<i>Condizioni</i>	<i>Lato</i>	<i>FS</i>
4A-1	"Sezione a" - Verifica locale argine	Statiche	Golena	2.071
4B-1	"Sezione a" - Verifica locale argine	Sismiche	Golena	1.889
4A-2	"Sezione a" - Verifica locale scavi di riprofilatura	Statiche	Golena	2.711
4B-2	"Sezione a" - Verifica locale scavi di riprofilatura	Sismiche	Golena	2.299
4A-3	"Sezione a" - Verifica globale argine-scavi	Statiche	Golena	2.943
4B-3	"Sezione a" - Verifica globale argine-scavi	Sismiche	Golena	2.205

Le verifiche effettuate presentano valori dei coefficienti di sicurezza rispettosi delle vigenti norme.

Nelle verifiche si assume la falda posta al p.c., condizione più gravosa per il lato golena.

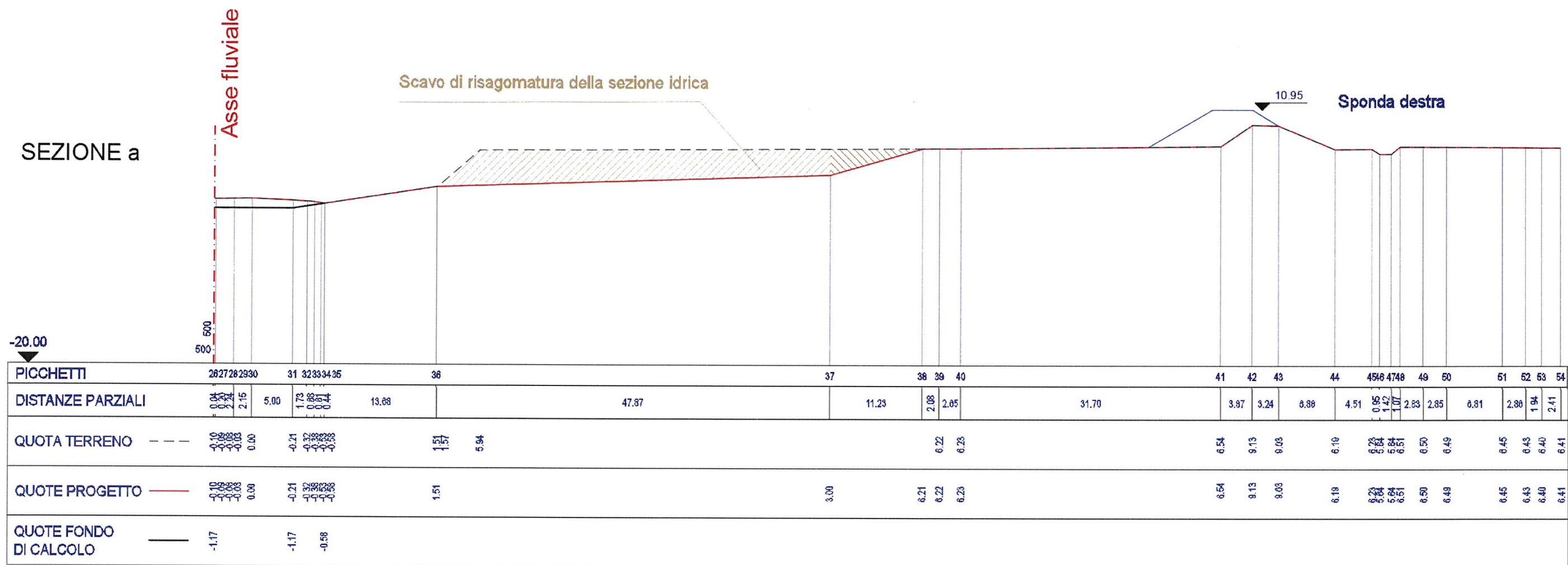


Figura 40 – "Sezione a" - Rif. tavola G04.1

APPENDICE 1

VERIFICHE DI STABILITA'

TABULATI DI CALCOLO

VERIFICA 4A-1

Analysis Method: Bishop
 Direction of Slip Movement: Right to Left
 Slip Surface Option: Grid and Radius
 P.W.P. Option: Piezometric lines with Ru
 Seismic Coefficient: (none)

Factor of Safety: 2.071
 Total Volume: 14.989
 Total Mass: 269.8
 Total Resisting Moment: 2076
 Total Activating Moment: 1002.4

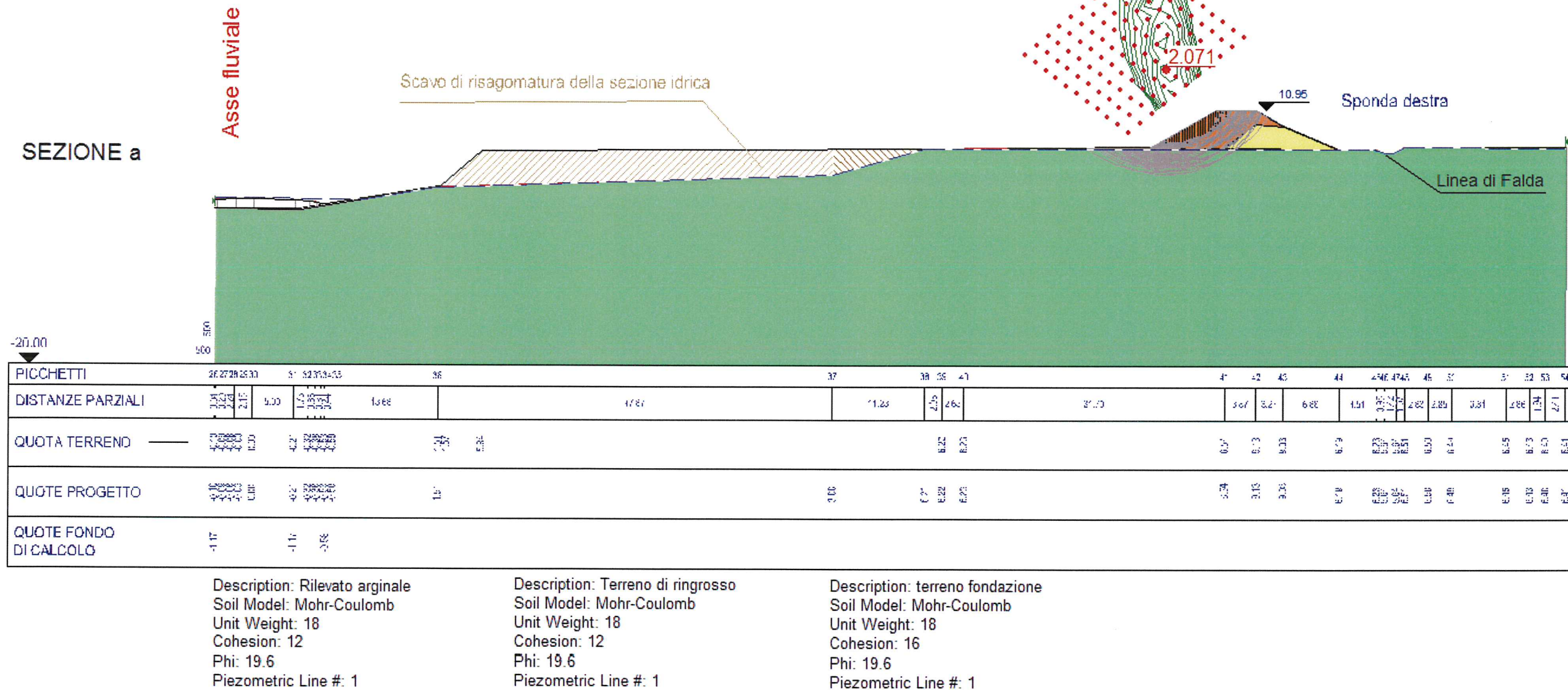
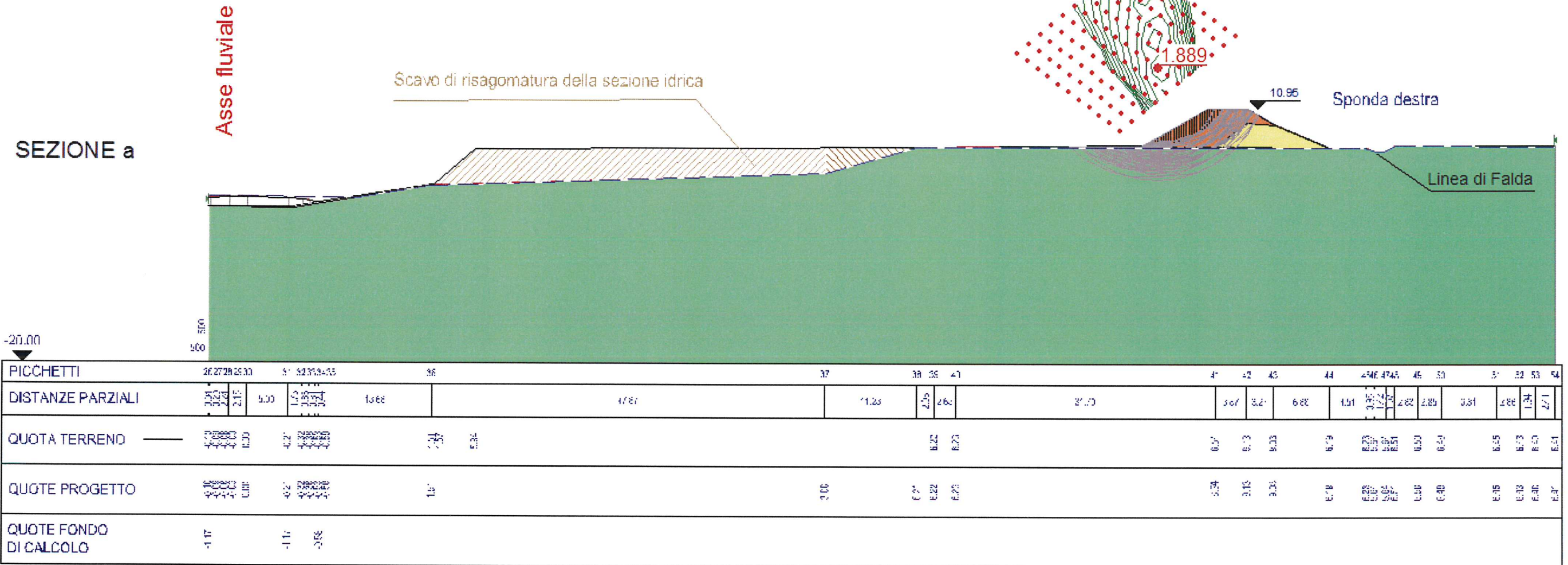


Figura 41 – "Sezione a" - Verifica locale argine (Statiche)

VERIFICA 4B-1

Analysis Method: Bishop
 Direction of Slip Movement: Right to Left
 Slip Surface Option: Grid and Radius
 P.W.P. Option: Piezometric lines with Ru
 Seismic Coefficient: Horizontal and Vertical

Factor of Safety: 1.889
 Total Volume: 14.989
 Total Mass: 269.8
 Total Resisting Moment: 2079.6
 Total Activating Moment: 1100.8



Description: Rilevato arginale
 Soil Model: Mohr-Coulomb
 Unit Weight: 18
 Cohesion: 12
 Phi: 19.6
 Piezometric Line #: 1

Description: Terreno di ringrosso
 Soil Model: Mohr-Coulomb
 Unit Weight: 18
 Cohesion: 12
 Phi: 19.6
 Piezometric Line #: 1

Description: terreno fondazione
 Soil Model: Mohr-Coulomb
 Unit Weight: 18
 Cohesion: 16
 Phi: 19.6
 Piezometric Line #: 1

Figura 42 – "Sezione a" - Verifica locale argine (Sismiche)

VERIFICA 4A-2

Analysis Method: Bishop
 Direction of Slip Movement: Right to Left
 Slip Surface Option: Grid and Radius
 P.W.P. Option: Piezometric lines with Ru
 Seismic Coefficient: (none)

Factor of Safety: 2.711
 Total Volume: 50.174
 Total Mass: 903.14
 Total Resisting Moment: 5140.8
 Total Activating Moment: 1896.1

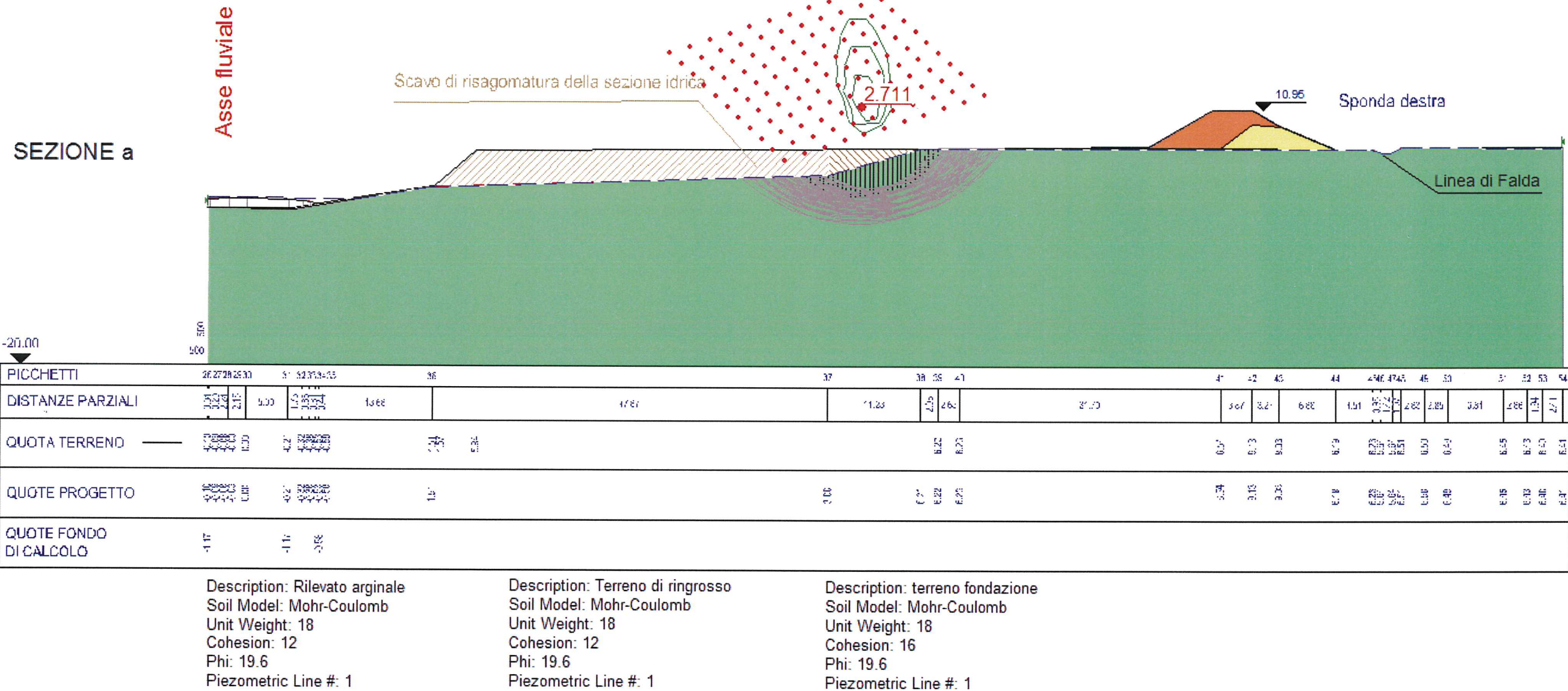


Figura 43 – "Sezione a" - Verifica locale scavi di riprofilatura (Statiche)

VERIFICA 4B-2

Analysis Method: Bishop
 Direction of Slip Movement: Right to Left
 Slip Surface Option: Grid and Radius
 P.W.P. Option: Piezometric lines with Ru
 Seismic Coefficient: Horizontal and Vertical

Factor of Safety: 2.299
 Total Volume: 67.352
 Total Mass: 1212.3
 Total Resisting Moment: 7700.6
 Total Activating Moment: 3349.8

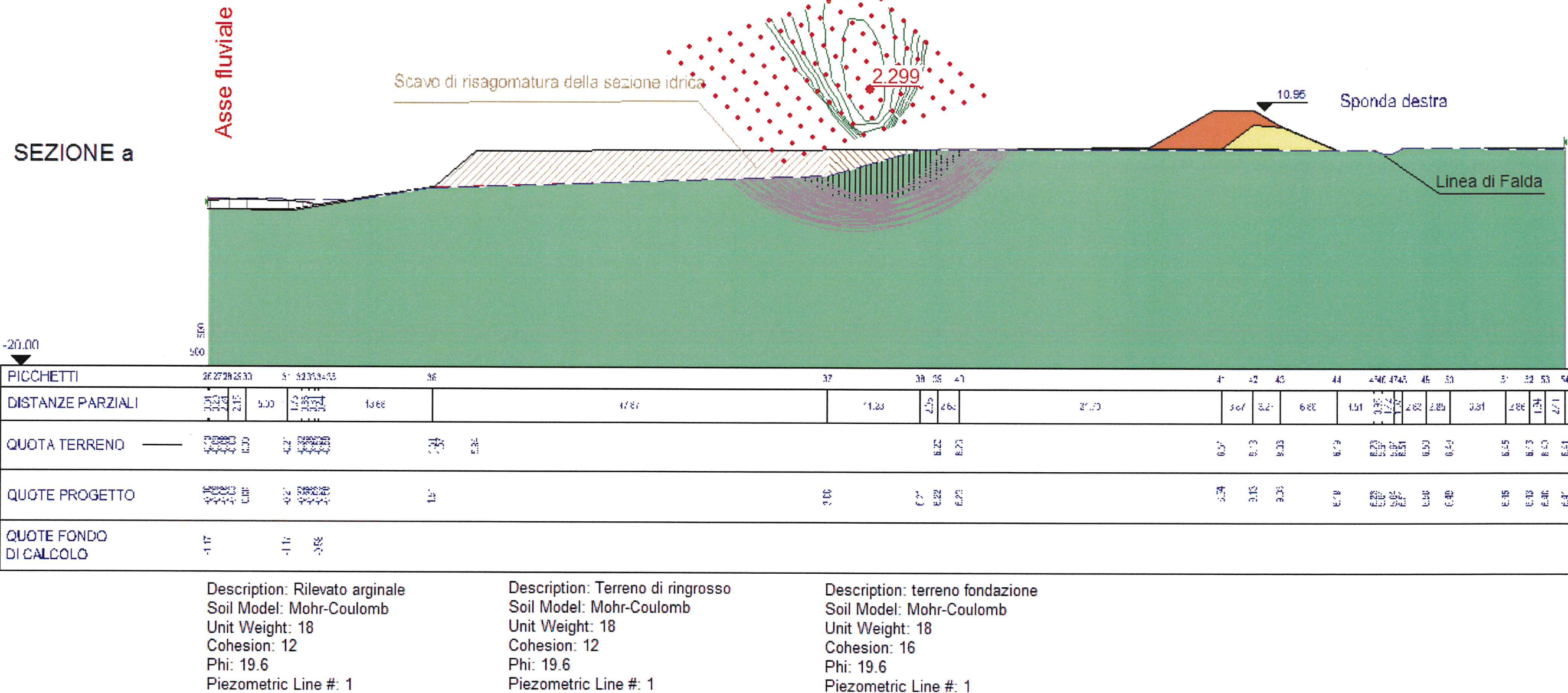
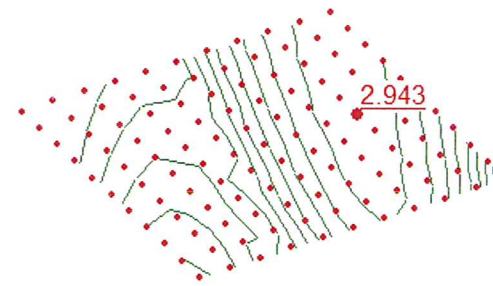


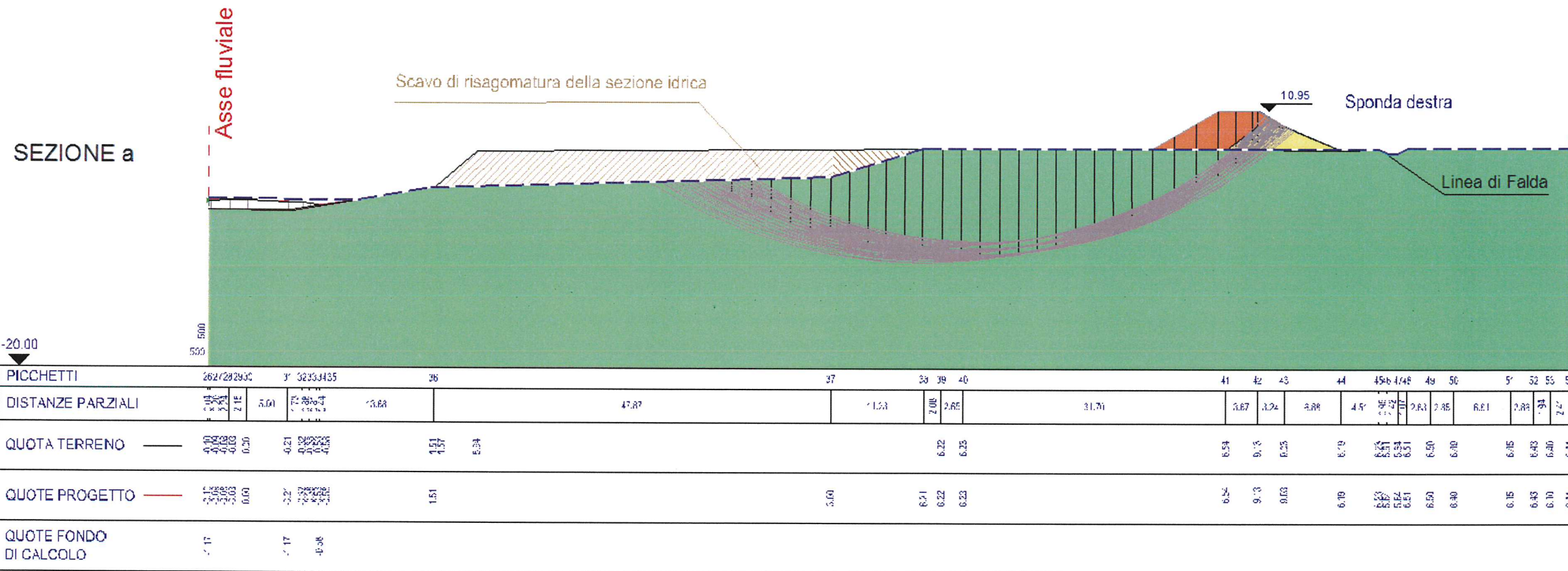
Figura 44 – "Sezione a" - Verifica locale scavi di riprofilatura (Sismiche)

VERIFICA 4A-3

Analysis Method: Bishop
 Direction of Slip Movement: Right to Left
 Slip Surface Option: Grid and Radius
 P.W.P. Option: Piezometric lines with Ru
 Seismic Coefficient: (none)



Factor of Safety: 2.943
 Total Volume: 589.96
 Total Mass: 10619
 Total Resisting Moment: 1.7112e+005
 Total Activating Moment: 58135



Description: Rilevato arginale
 Soil Model: Mohr-Coulomb
 Unit Weight: 18
 Cohesion: 12
 Phi: 19.6
 Piezometric Line #: 1

Description: Terreno di ringrosso
 Soil Model: Mohr-Coulomb
 Unit Weight: 18
 Cohesion: 12
 Phi: 19.6
 Piezometric Line #: 1

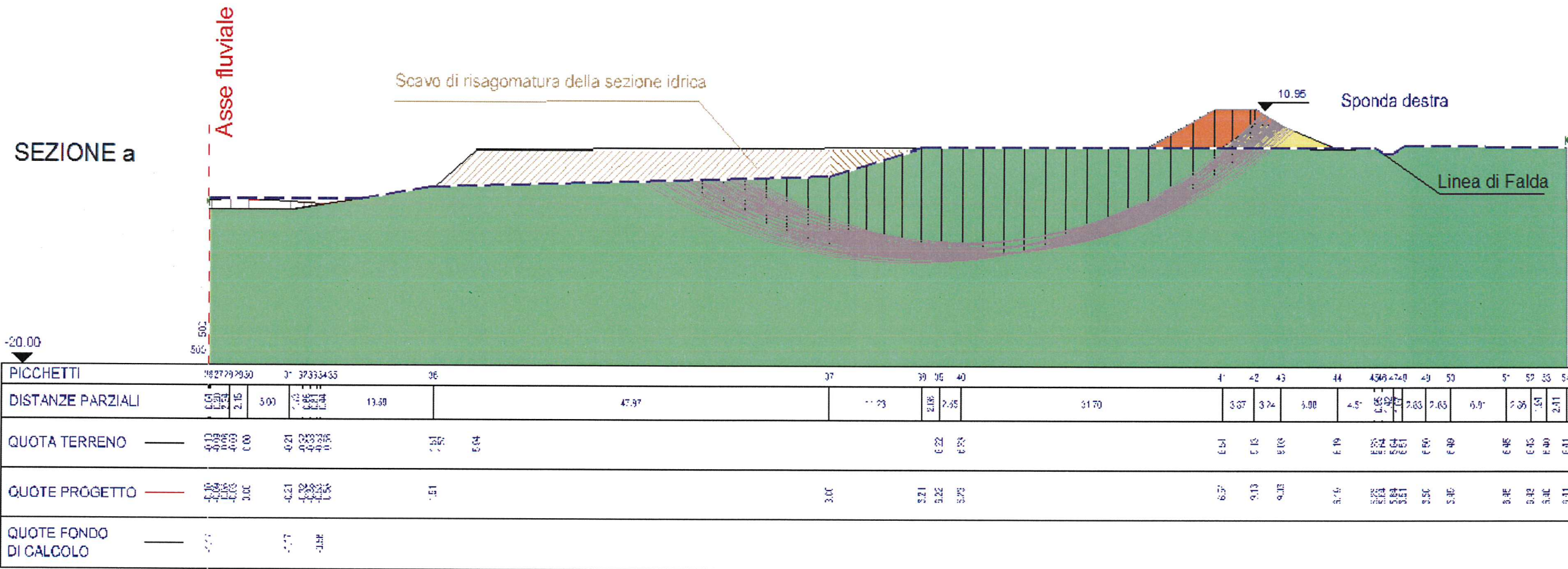
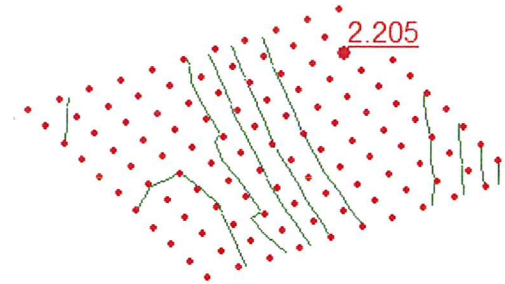
Description: terreno fondazione
 Soil Model: Mohr-Coulomb
 Unit Weight: 18
 Cohesion: 16
 Phi: 19.6
 Piezometric Line #: 1

Figura 45 – "Sezione a" - Verifica globale argine scavi (Statiche)

VERIFICA 4B-3

Analysis Method: Bishop
 Direction of Slip Movement: Right to Left
 Slip Surface Option: Grid and Radius
 P.W.P. Option: Piezometric lines with Ru
 Seismic Coefficient: Horizontal and Vertical

Factor of Safety: 2.205
 Total Volume: 622.08
 Total Mass: 11197
 Total Resisting Moment: 1.9916e+005
 Total Activating Moment: 90330



Description: Rilevato arginale
 Soil Model: Mohr-Coulomb
 Unit Weight: 18
 Cohesion: 12
 Phi: 19.6
 Piezometric Line #: 1

Description: Terreno di ringrosso
 Soil Model: Mohr-Coulomb
 Unit Weight: 18
 Cohesion: 12
 Phi: 19.6
 Piezometric Line #: 1

Description: terreno fondazione
 Soil Model: Mohr-Coulomb
 Unit Weight: 18
 Cohesion: 16
 Phi: 19.6
 Piezometric Line #: 1

Figura 46 – "Sezione a" - Verifica globale argine scavi (Sismiche)

Center_X	Center_Y	Radius	Slip_Surface	Method					
1.405280e+002	1.582308e+001	9.316824e+000	695	1					
SL#	X_Left	Y_L_Top	Y_L_Bottom	X_Right	Y_R_Top	Y_R_Bottom	Mid_Height		
1	1.391013e+002	6.616141e+000	6.616141e+000	1.394167e+002	6.797885e+000	6.572776e+000	1.139272e-001		
2	1.394167e+002	6.797885e+000	6.572776e+000	1.397320e+002	6.979629e+000	6.540320e+000	3.336500e-001		
3	1.397320e+002	6.979629e+000	6.540320e+000	1.400474e+002	7.161373e+000	6.518660e+000	5.423548e-001		
4	1.400474e+002	7.161373e+000	6.518660e+000	1.403627e+002	7.343117e+000	6.507721e+000	7.403913e-001		
5	1.403627e+002	7.343117e+000	6.507721e+000	1.406781e+002	7.524862e+000	6.507465e+000	9.277307e-001		
6	1.406781e+002	7.524862e+000	6.507465e+000	1.409935e+002	7.706606e+000	6.517890e+000	1.104392e+000		
7	1.409935e+002	7.706606e+000	6.517890e+000	1.413088e+002	7.888350e+000	6.539034e+000	1.270359e+000		
8	1.413088e+002	7.888350e+000	6.539034e+000	1.416242e+002	8.070094e+000	6.570968e+000	1.425576e+000		
9	1.416242e+002	8.070094e+000	6.570968e+000	1.419396e+002	8.251838e+000	6.613807e+000	1.569950e+000		
10	1.419396e+002	8.251838e+000	6.613807e+000	1.422549e+002	8.433582e+000	6.667701e+000	1.703349e+000		
11	1.422549e+002	8.433582e+000	6.667701e+000	1.425703e+002	8.615326e+000	6.732850e+000	1.825599e+000		
12	1.425703e+002	8.615326e+000	6.732850e+000	1.428856e+002	8.797070e+000	6.809495e+000	1.936480e+000		
13	1.428856e+002	8.797070e+000	6.809495e+000	1.432010e+002	8.978815e+000	6.897934e+000	2.035723e+000		
14	1.432010e+002	8.978815e+000	6.897934e+000	1.435164e+002	9.160559e+000	6.998521e+000	2.123002e+000		
15	1.435164e+002	9.160559e+000	6.998521e+000	1.438317e+002	9.342303e+000	7.111677e+000	2.197932e+000		
16	1.438317e+002	9.342303e+000	7.111677e+000	1.441471e+002	9.524047e+000	7.237898e+000	2.260055e+000		
17	1.441471e+002	9.524047e+000	7.237898e+000	1.444625e+002	9.705791e+000	7.377772e+000	2.308831e+000		
18	1.444625e+002	9.705791e+000	7.377772e+000	1.447778e+002	9.887535e+000	7.531988e+000	2.343624e+000		
19	1.447778e+002	9.887535e+000	7.531988e+000	1.450932e+002	1.006928e+001	7.701363e+000	2.363684e+000		
20	1.450932e+002	1.006928e+001	7.701363e+000	1.454085e+002	1.025102e+001	7.886868e+000	2.368120e+000		
21	1.454085e+002	1.025102e+001	7.886868e+000	1.457239e+002	1.043277e+001	8.089664e+000	2.355872e+000		
22	1.457239e+002	1.043277e+001	8.089664e+000	1.460393e+002	1.061451e+001	8.311152e+000	2.325667e+000		
23	1.460393e+002	1.061451e+001	8.311152e+000	1.463546e+002	1.079626e+001	8.553038e+000	2.275960e+000		
24	1.463546e+002	1.079626e+001	8.553038e+000	1.466700e+002	1.097800e+001	8.817436e+000	2.204856e+000		
25	1.466700e+002	1.097800e+001	8.817436e+000	1.469727e+002	1.097800e+001	9.094806e+000	2.024946e+000		
26	1.469727e+002	1.097800e+001	9.094806e+000	1.472753e+002	1.097800e+001	9.398355e+000	1.734911e+000		
27	1.472753e+002	1.097800e+001	9.398355e+000	1.475780e+002	1.097800e+001	9.731995e+000	1.416877e+000		
28	1.475780e+002	1.097800e+001	9.731995e+000	1.478806e+002	1.097800e+001	1.010099e+001	1.066326e+000		
29	1.478806e+002	1.097800e+001	1.010099e+001	1.481833e+002	1.097800e+001	1.051270e+001	6.770711e-001		
30	1.481833e+002	1.097800e+001	1.051270e+001	1.484859e+002	1.097800e+001	1.097799e+001	2.402306e-001		
SL#	L_Load_X	L_Load_Y	A_Load_X	A_Load_Y	P_Load_X	P_Load_Y	A_Modifier	AS_Load_X	AS_Load_Y
1	0.0000e+000	0.0000e+000	0.0000e+000	0.0000e+000	0.0000e+000	0.0000e+000	1.0000e+000	0.0000e+000	0.0000e+000
2	0.0000e+000	0.0000e+000	0.0000e+000	0.0000e+000	0.0000e+000	0.0000e+000	1.0000e+000	0.0000e+000	0.0000e+000
3	0.0000e+000	0.0000e+000	0.0000e+000	0.0000e+000	0.0000e+000	0.0000e+000	1.0000e+000	0.0000e+000	0.0000e+000
4	0.0000e+000	0.0000e+000	0.0000e+000	0.0000e+000	0.0000e+000	0.0000e+000	1.0000e+000	0.0000e+000	0.0000e+000
5	0.0000e+000	0.0000e+000	0.0000e+000	0.0000e+000	0.0000e+000	0.0000e+000	1.0000e+000	0.0000e+000	0.0000e+000
6	0.0000e+000	0.0000e+000	0.0000e+000	0.0000e+000	0.0000e+000	0.0000e+000	1.0000e+000	0.0000e+000	0.0000e+000
7	0.0000e+000	0.0000e+000	0.0000e+000	0.0000e+000	0.0000e+000	0.0000e+000	1.0000e+000	0.0000e+000	0.0000e+000
8	0.0000e+000	0.0000e+000	0.0000e+000	0.0000e+000	0.0000e+000	0.0000e+000	1.0000e+000	0.0000e+000	0.0000e+000
9	0.0000e+000	0.0000e+000	0.0000e+000	0.0000e+000	0.0000e+000	0.0000e+000	1.0000e+000	0.0000e+000	0.0000e+000
10	0.0000e+000	0.0000e+000	0.0000e+000	0.0000e+000	0.0000e+000	0.0000e+000	1.0000e+000	0.0000e+000	0.0000e+000
11	0.0000e+000	0.0000e+000	0.0000e+000	0.0000e+000	0.0000e+000	0.0000e+000	1.0000e+000	0.0000e+000	0.0000e+000
12	0.0000e+000	0.0000e+000	0.0000e+000	0.0000e+000	0.0000e+000	0.0000e+000	1.0000e+000	0.0000e+000	0.0000e+000
13	0.0000e+000	0.0000e+000	0.0000e+000	0.0000e+000	0.0000e+000	0.0000e+000	1.0000e+000	0.0000e+000	0.0000e+000
14	0.0000e+000	0.0000e+000	0.0000e+000	0.0000e+000	0.0000e+000	0.0000e+000	1.0000e+000	0.0000e+000	0.0000e+000
15	0.0000e+000	0.0000e+000	0.0000e+000	0.0000e+000	0.0000e+000	0.0000e+000	1.0000e+000	0.0000e+000	0.0000e+000
16	0.0000e+000	0.0000e+000	0.0000e+000	0.0000e+000	0.0000e+000	0.0000e+000	1.0000e+000	0.0000e+000	0.0000e+000
17	0.0000e+000	0.0000e+000	0.0000e+000	0.0000e+000	0.0000e+000	0.0000e+000	1.0000e+000	0.0000e+000	0.0000e+000
18	0.0000e+000	0.0000e+000	0.0000e+000	0.0000e+000	0.0000e+000	0.0000e+000	1.0000e+000	0.0000e+000	0.0000e+000
19	0.0000e+000	0.0000e+000	0.0000e+000	0.0000e+000	0.0000e+000	0.0000e+000	1.0000e+000	0.0000e+000	0.0000e+000
20	0.0000e+000	0.0000e+000	0.0000e+000	0.0000e+000	0.0000e+000	0.0000e+000	1.0000e+000	0.0000e+000	0.0000e+000
21	0.0000e+000	0.0000e+000	0.0000e+000	0.0000e+000	0.0000e+000	0.0000e+000	1.0000e+000	0.0000e+000	0.0000e+000
22	0.0000e+000	0.0000e+000	0.0000e+000	0.0000e+000	0.0000e+000	0.0000e+000	1.0000e+000	0.0000e+000	0.0000e+000
23	0.0000e+000	0.0000e+000	0.0000e+000	0.0000e+000	0.0000e+000	0.0000e+000	1.0000e+000	0.0000e+000	0.0000e+000
24	0.0000e+000	0.0000e+000	0.0000e+000	0.0000e+000	0.0000e+000	0.0000e+000	1.0000e+000	0.0000e+000	0.0000e+000
25	0.0000e+000	0.0000e+000	0.0000e+000	0.0000e+000	0.0000e+000	0.0000e+000	1.0000e+000	0.0000e+000	0.0000e+000
26	0.0000e+000	0.0000e+000	0.0000e+000	0.0000e+000	0.0000e+000	0.0000e+000	1.0000e+000	0.0000e+000	0.0000e+000
27	0.0000e+000	0.0000e+000	0.0000e+000	0.0000e+000	0.0000e+000	0.0000e+000	1.0000e+000	0.0000e+000	0.0000e+000
28	0.0000e+000	0.0000e+000	0.0000e+000	0.0000e+000	0.0000e+000	0.0000e+000	1.0000e+000	0.0000e+000	0.0000e+000
29	0.0000e+000	0.0000e+000	0.0000e+000	0.0000e+000	0.0000e+000	0.0000e+000	1.0000e+000	0.0000e+000	0.0000e+000
30	0.0000e+000	0.0000e+000	0.0000e+000	0.0000e+000	0.0000e+000	0.0000e+000	1.0000e+000	0.0000e+000	0.0000e+000
SL#	Weight	Pore_Water	Alpha	Force Fn.	Seismic_F	Seismic_Y	Pore_Air	Phi_B	Liquified
1	6.4671e-001	0.0000e+000	-7.8296e+000	1.0000e+000	0.0000e+000	0.0000e+000	0.0000e+000	0.0000e+000	0
2	1.8935e+000	0.0000e+000	-5.8759e+000	1.0000e+000	0.0000e+000	0.0000e+000	0.0000e+000	0.0000e+000	0
3	3.0787e+000	0.0000e+000	-3.9290e+000	1.0000e+000	0.0000e+000	0.0000e+000	0.0000e+000	0.0000e+000	0
4	4.2029e+000	0.0000e+000	-1.9866e+000	1.0000e+000	0.0000e+000	0.0000e+000	0.0000e+000	0.0000e+000	0
5	5.2663e+000	0.0000e+000	-4.6578e-002	1.0000e+000	0.0000e+000	0.0000e+000	0.0000e+000	0.0000e+000	0
6	6.2691e+000	0.0000e+000	1.8934e+000	1.0000e+000	0.0000e+000	0.0000e+000	0.0000e+000	0.0000e+000	0
7	7.2112e+000	0.0000e+000	3.8356e+000	1.0000e+000	0.0000e+000	0.0000e+000	0.0000e+000	0.0000e+000	0
8	8.0923e+000	0.0000e+000	5.7822e+000	1.0000e+000	0.0000e+000	0.0000e+000	0.0000e+000	0.0000e+000	0
9	8.9119e+000	0.0000e+000	7.7356e+000	1.0000e+000	0.0000e+000	0.0000e+000	0.0000e+000	0.0000e+000	0
10	9.6691e+000	0.0000e+000	9.6980e+000	1.0000e+000	0.0000e+000	0.0000e+000	0.0000e+000	0.0000e+000	0
11	1.0363e+001	0.0000e+000	1.1672e+001	1.0000e+000	0.0000e+000	0.0000e+000	0.0000e+000	0.0000e+000	0
12	1.0992e+001	0.0000e+000	1.3660e+001	1.0000e+000	0.0000e+000	0.0000e+000	0.0000e+000	0.0000e+000	

25	1.1031e+001	0.0000e+000	4.2504e+001	1.0000e+000	0.0000e+000	0.0000e+000	0.0000e+000	0.0000e+000	0
26	9.4514e+000	0.0000e+000	4.5085e+001	1.0000e+000	0.0000e+000	0.0000e+000	0.0000e+000	0.0000e+000	0
27	7.7188e+000	0.0000e+000	4.7788e+001	1.0000e+000	0.0000e+000	0.0000e+000	0.0000e+000	0.0000e+000	0
28	5.8091e+000	0.0000e+000	5.0641e+001	1.0000e+000	0.0000e+000	0.0000e+000	0.0000e+000	0.0000e+000	0
29	3.6885e+000	0.0000e+000	5.3680e+001	1.0000e+000	0.0000e+000	0.0000e+000	0.0000e+000	0.0000e+000	0
30	1.3087e+000	0.0000e+000	5.6958e+001	1.0000e+000	0.0000e+000	0.0000e+000	0.0000e+000	0.0000e+000	0

Bishop_Method_Fm= 2.0710101 Applied_Lambda= 0.0000

SL#	Normal_M	ShearMob	Phi_Angle	Cohesion	SideLeft	ShearLeft	SideRight	ShearRight
1	9.2838e-001	2.0042e+000	1.9600e+001	1.2000e+001	0.0000e+000	0.0000e+000	-2.2238e+000	0.0000e+000
2	2.1302e+000	2.2033e+000	1.9600e+001	1.2000e+001	2.2238e+000	0.0000e+000	-4.7557e+000	0.0000e+000
3	3.2501e+000	2.3905e+000	1.9600e+001	1.2000e+001	4.7557e+000	0.0000e+000	-7.4949e+000	0.0000e+000
4	4.2944e+000	2.5669e+000	1.9600e+001	1.2000e+001	7.4949e+000	0.0000e+000	-1.0350e+001	0.0000e+000
5	5.2685e+000	2.7332e+000	1.9600e+001	1.2000e+001	1.0350e+001	0.0000e+000	-1.3236e+001	0.0000e+000
6	6.1770e+000	2.8904e+000	1.9600e+001	1.2000e+001	1.3236e+001	0.0000e+000	-1.6078e+001	0.0000e+000
7	7.0237e+000	3.0391e+000	1.9600e+001	1.2000e+001	1.6078e+001	0.0000e+000	-1.8804e+001	0.0000e+000
8	7.8117e+000	3.1799e+000	1.9600e+001	1.2000e+001	1.8804e+001	0.0000e+000	-2.1352e+001	0.0000e+000
9	8.5437e+000	3.3131e+000	1.9600e+001	1.2000e+001	2.1352e+001	0.0000e+000	-2.3664e+001	0.0000e+000
10	9.2215e+000	3.4394e+000	1.9600e+001	1.2000e+001	2.3664e+001	0.0000e+000	-2.5685e+001	0.0000e+000
11	9.8467e+000	3.5590e+000	1.9600e+001	1.2000e+001	2.5685e+001	0.0000e+000	-2.7369e+001	0.0000e+000
12	1.0420e+001	3.6722e+000	1.9600e+001	1.2000e+001	2.7369e+001	0.0000e+000	-2.8673e+001	0.0000e+000
13	1.0942e+001	3.7792e+000	1.9600e+001	1.2000e+001	2.8673e+001	0.0000e+000	-2.9559e+001	0.0000e+000
14	1.1412e+001	3.8802e+000	1.9600e+001	1.2000e+001	2.9559e+001	0.0000e+000	-2.9996e+001	0.0000e+000
15	1.1829e+001	3.9753e+000	1.9600e+001	1.2000e+001	2.9996e+001	0.0000e+000	-2.9955e+001	0.0000e+000
16	1.2192e+001	4.0646e+000	1.9600e+001	1.2000e+001	2.9955e+001	0.0000e+000	-2.9417e+001	0.0000e+000
17	1.2498e+001	4.1477e+000	1.9600e+001	1.2000e+001	2.9417e+001	0.0000e+000	-2.8364e+001	0.0000e+000
18	1.2743e+001	4.2252e+000	1.9600e+001	1.2000e+001	2.8364e+001	0.0000e+000	-2.6790e+001	0.0000e+000
19	1.2923e+001	4.2962e+000	1.9600e+001	1.2000e+001	2.6790e+001	0.0000e+000	-2.4693e+001	0.0000e+000
20	1.3031e+001	4.3606e+000	1.9600e+001	1.2000e+001	2.4693e+001	0.0000e+000	-2.2083e+001	0.0000e+000
21	1.3059e+001	4.4179e+000	1.9600e+001	1.2000e+001	2.2083e+001	0.0000e+000	-1.8978e+001	0.0000e+000
22	1.2995e+001	4.4674e+000	1.9600e+001	1.2000e+001	1.8978e+001	0.0000e+000	-1.5412e+001	0.0000e+000
23	1.2825e+001	4.5081e+000	1.9600e+001	1.2000e+001	1.5412e+001	0.0000e+000	-1.1436e+001	0.0000e+000
24	1.2528e+001	4.5387e+000	1.9600e+001	1.2000e+001	1.1436e+001	0.0000e+000	-7.1224e+000	0.0000e+000
25	1.1043e+001	4.2776e+000	1.9600e+001	1.2000e+001	7.1224e+000	0.0000e+000	-3.0603e+000	0.0000e+000
26	9.2925e+000	4.0817e+000	1.9600e+001	1.2000e+001	3.0603e+000	0.0000e+000	3.9997e-001	0.0000e+000
27	7.2389e+000	3.8550e+000	1.9600e+001	1.2000e+001	-3.9997e-001	0.0000e+000	2.9417e+000	0.0000e+000
28	4.7853e+000	3.5883e+000	1.9600e+001	1.2000e+001	-2.9417e+000	0.0000e+000	4.1466e+000	0.0000e+000
29	1.7826e+000	3.2676e+000	1.9600e+001	1.2000e+001	-4.1466e+000	0.0000e+000	3.4411e+000	0.0000e+000
30	-2.0128e+000	2.8706e+000	1.9600e+001	1.2000e+001	-3.4411e+000	0.0000e+000	3.6415e-014	0.0000e+000

Slip_Surface_Summary

Analysis	Volume	Weight	Res_Moment	Act_Moment	Res_Force	Act_Force	FOS
Bishop Method	1.4989e+001	2.6980e+002	2.0760e+003	1.0024e+003			2.0710101

4B-1	"Sezione a" - Verifica locale argine	Sismiche	Golena	1.889
------	--------------------------------------	----------	--------	-------

Center_X		Center_Y	Radius	Slip_Surface	Method				
1.405280e+002		1.582308e+001	9.316824e+000	695	1				
SL#	X_Left	Y_L_Top	Y_L_Bottom	X_Right	Y_R_Top	Y_R_Bottom	Mid_Height		
1	1.391013e+002	6.616141e+000	6.616141e+000	1.394167e+002	6.797885e+000	6.572776e+000	1.139272e-001		
2	1.394167e+002	6.797885e+000	6.572776e+000	1.397320e+002	6.979629e+000	6.540320e+000	3.335650e-001		
3	1.397320e+002	6.979629e+000	6.540320e+000	1.400474e+002	7.161373e+000	6.518660e+000	5.423548e-001		
4	1.400474e+002	7.161373e+000	6.518660e+000	1.403627e+002	7.343117e+000	6.507721e+000	7.403913e-001		
5	1.403627e+002	7.343117e+000	6.507721e+000	1.406781e+002	7.524862e+000	6.507465e+000	9.277307e-001		
6	1.406781e+002	7.524862e+000	6.507465e+000	1.409935e+002	7.706606e+000	6.517890e+000	1.104392e+000		
7	1.409935e+002	7.706606e+000	6.517890e+000	1.413088e+002	7.888350e+000	6.539034e+000	1.270359e+000		
8	1.413088e+002	7.888350e+000	6.539034e+000	1.416242e+002	8.070094e+000	6.570968e+000	1.425576e+000		
9	1.416242e+002	8.070094e+000	6.570968e+000	1.419396e+002	8.251838e+000	6.613807e+000	1.569950e+000		
10	1.419396e+002	8.251838e+000	6.613807e+000	1.422549e+002	8.433582e+000	6.667701e+000	1.703349e+000		
11	1.422549e+002	8.433582e+000	6.667701e+000	1.425703e+002	8.615326e+000	6.732850e+000	1.825599e+000		
12	1.425703e+002	8.615326e+000	6.732850e+000	1.428856e+002	8.797070e+000	6.809495e+000	1.936480e+000		
13	1.428856e+002	8.797070e+000	6.809495e+000	1.432010e+002	8.978815e+000	6.897934e+000	2.035723e+000		
14	1.432010e+002	8.978815e+000	6.897934e+000	1.435164e+002	9.160559e+000	6.998521e+000	2.123002e+000		
15	1.435164e+002	9.160559e+000	6.998521e+000	1.438317e+002	9.342303e+000	7.111677e+000	2.197932e+000		
16	1.438317e+002	9.342303e+000	7.111677e+000	1.441471e+002	9.524047e+000	7.237898e+000	2.260055e+000		
17	1.441471e+002	9.524047e+000	7.237898e+000	1.444625e+002	9.705791e+000	7.377772e+000	2.308831e+000		
18	1.444625e+002	9.705791e+000	7.377772e+000	1.447778e+002	9.887535e+000	7.531988e+000	2.343624e+000		
19	1.447778e+002	9.887535e+000	7.531988e+000	1.450932e+002	1.006928e+001	7.701363e+000	2.363684e+000		
20	1.450932e+002	1.006928e+001	7.701363e+000	1.454085e+002	1.025102e+001	7.886868e+000	2.368120e+000		
21	1.454085e+002	1.025102e+001	7.886868e+000	1.457239e+002	1.043277e+001	8.089664e+000	2.35872e+000		
22	1.457239e+002	1.043277e+001	8.089664e+000	1.460393e+002	1.061451e+001	8.311152e+000	2.325667e+000		
23	1.460393e+002	1.061451e+001	8.311152e+000	1.463546e+002	1.079626e+001	8.553038e+000	2.275960e+000		
24	1.463546e+002	1.079626e+001	8.553038e+000	1.466700e+002	1.097800e+001	8.817436e+000	2.204856e+000		
25	1.466700e+002	1.097800e+001	8.817436e+000	1.469727e+002	1.097800e+001	9.094806e+000	2.024946e+000		
26	1.469727e+002	1.097800e+001	9.094806e+000	1.472753e+002	1.097800e+001	9.398355e+000	1.734911e+000		
27	1.472753e+002	1.097800e+001	9.398355e+000	1.475780e+002	1.097800e+001	9.731995e+000	1.416877e+000		
28	1.475780e+002	1.097800e+001	9.731995e+000	1.478806e+002	1.097800e+001	1.010099e+001	1.066326e+000		
29	1.478806e+002	1.097800e+001	1.010099e+001	1.481833e+002	1.097800e+001	1.051270e+001	6.770711e-001		
30	1.481833e+002	1.097800e+001	1.051270e+001	1.484859e+002	1.097800e+001	1.097799e+001	2.402306e-001		
SL#	L_Load_X	L_Load_Y	A_Load_X	A_Load_Y	P_Load_X	P_Load_Y	A_Modifier	AS_Load_X	AS_Load_Y
1	0.0000e+000	0.0000e+000	0.0000e+000	0.0000e+000	0.0000e+000	0.0000e+000	1.0000e+000	0.0000e+000	0.0000e+000
2	0.0000e+000	0.0000e+000	0.0000e+000	0.0000e+000	0.0000e+000	0.0000e+000	1.0000e+000	0.0000e+000	0.0000e+000
3	0.0000e+000	0.0000e+000	0.0000e+000	0.0000e+000	0.0000e+000	0.0000e+000	1.0000e+000	0.0000e+000	0.0000e+000
4	0.0000e+000	0.0000e+000	0.0000e+000	0.0000e+000	0.0000e+000	0.0000e+000	1.0000e+000	0.0000e+000	0.0000e+000
5	0.0000e+000	0.0000e+000	0.0000e+000	0.0000e+000	0.0000e+000	0.0000e+000	1.0000e+000	0.0000e+000	0.0000e+000
6	0.0000e+000	0.0000e+000	0.0000e+000	0.0000e+000	0.0000e+000	0.0000e+000	1.0000e+000	0.0000e+000	0.0000e+000
7	0.0000e+000	0.0000e+000	0.0000e+000	0.0000e+000	0.0000e+000	0.0000e+000	1.0000e+000	0.0000e+000	0.0000e+000
8	0.0000e+000	0.0000e+000	0.0000e+000	0.0000e+000	0.0000e+000	0.0000e+000	1.0000e+000	0.0000e+000	0.0000e+000
9	0.0000e+000	0.0000e+000	0.0000e+000	0.0000e+000	0.0000e+000	0.0000e+000	1.0000e+000	0.0000e+000	0.0000e+000
10	0.0000e+000	0.0000e+000	0.0000e+000	0.0000e+000	0.0000e+000	0.0000e+000	1.0000e+000	0.0000e+000	0.0000e+000
11	0.0000e+000	0.0000e+000	0.0000e+000	0.0000e+000	0.0000e+000	0.0000e+000	1.0000e+000	0.0000e+000	0.0000e+000
12	0.0000e+000	0.0000e+000	0.0000e+000	0.0000e+000	0.0000e+000	0.0000e+000	1.0000e+000	0.0000e+000	0.0000e+000
13	0.0000e+000	0.0000e+000	0.0000e+000	0.0000e+000	0.0000e+000	0.0000e+000	1.0000e+000	0.0000e+000	0.0000e+000
14	0.0000e+000	0.0000e+000	0.0000e+000	0.0000e+000	0.0000e+000	0.0000e+000	1.0000e+000	0.0000e+000	0.0000e+000
15	0.0000e+000	0.0000e+000	0.0000e+000	0.0000e+000	0.0000e+000	0.0000e+000	1.0000e+000	0.0000e+000	0.0000e+000
16	0.0000e+000	0.0000e+000	0.0000e+000	0.0000e+000	0.0000e+000	0.0000e+000	1.0000e+000	0.0000e+000	0.0000e+000
17	0.0000e+000	0.0000e+000	0.0000e+000	0.0000e+000	0.0000e+000	0.0000e+000	1.0000e+000	0.0000e+000	0.0000e+000
18	0.0000e+000	0.0000e+000	0.0000e+000	0.0000e+000	0.0000e+000	0.0000e+000	1.0000e+000	0.0000e+000	0.0000e+000
19	0.0000e+000	0.0000e+000	0.0000e+000	0.0000e+000	0.0000e+000	0.0000e+000	1.0000e+000	0.0000e+000	0.0000e+000
20	0.0000e+000	0.0000e+000	0.0000e+000	0.0000e+000	0.0000e+000	0.0000e+000	1.0000e+000	0.0000e+000	0.0000e+000
21	0.0000e+000	0.0000e+000	0.0000e+000	0.0000e+000	0.0000e+000	0.0000e+000	1.0000e+000	0.0000e+000	0.0000e+000
22	0.0000e+000	0.0000e+000	0.0000e+000	0.0000e+000	0.0000e+000	0.0000e+000	1.0000e+000	0.0000e+000	0.0000e+000
23	0.0000e+000	0.0000e+000	0.0000e+000	0.0000e+000	0.0000e+000	0.0000e+000	1.0000e+000	0.0000e+000	0.0000e+000
24	0.0000e+000	0.0000e+000	0.0000e+000	0.0000e+000	0.0000e+000	0.0000e+000	1.0000e+000	0.0000e+000	0.0000e+000
25	0.0000e+000	0.0000e+000	0.0000e+000	0.0000e+000	0.0000e+000	0.0000e+000	1.0000e+000	0.0000e+000	0.0000e+000
26	0.0000e+000	0.0000e+000	0.0000e+000	0.0000e+000	0.0000e+000	0.0000e+000	1.0000e+000	0.0000e+000	0.0000e+000
27	0.0000e+000	0.0000e+000	0.0000e+000	0.0000e+000	0.0000e+000	0.0000e+000	1.0000e+000	0.0000e+000	0.0000e+000
28	0.0000e+000	0.0000e+000	0.0000e+000	0.0000e+000	0.0000e+000	0.0000e+000	1.0000e+000	0.0000e+000	0.0000e+000
29	0.0000e+000	0.0000e+000	0.0000e+000	0.0000e+000	0.0000e+000	0.0000e+000	1.0000e+000	0.0000e+000	0.0000e+000
30	0.0000e+000	0.0000e+000	0.0000e+000	0.0000e+000	0.0000e+000	0.0000e+000	1.0000e+000	0.0000e+000	0.0000e+000
SL#	Weight	Pore_Water	Alpha	Force Fn.	Seismic_F	Seismic_Y	Pore_Air	Phi_B	Liquified
1	6.5965e-001	0.0000e+000	-7.8296e+000	1.0000e+000	-2.5868e-002	6.6500e+000	0.0000e+000	0.0000e+000	0
2	1.9314e+000	0.0000e+000	-5.8759e+000	1.0000e+000	-7.5740e-002	6.7220e+000	0.0000e+000	0.0000e+000	0
3	3.1403e+000	0.0000e+000	-3.9290e+000	1.0000e+000	-1.2315e-001	6.7993e+000	0.0000e+000	0.0000e+000	0
4	4.2869e+000	0.0000e+000	-1.9866e+000	1.0000e+000	-1.6811e-001	6.8820e+000	0.0000e+000	0.0000e+000	0
5	5.3716e+000	0.0000e+000	-4.6578e-002	1.0000e+000	-2.1065e-001	6.9701e+000	0.0000e+000	0.0000e+000	0
6	6.3945e+000	0.0000e+000	1.8934e+000	1.0000e+000	-2.5076e-001	7.0635e+000	0.0000e+000	0.0000e+000	0
7	7.3555e+000	0.0000e+000	3.8356e+000	1.0000e+000	-2.8845e-001	7.1623e+000	0.0000e+000	0.0000e+000	0
8	8.2542e+000	0.0000e+000	5.7822e+000	1.0000e+000	-3.2369e-001	7.2664e+000	0.0000e+000	0.0000e+000	0
9	9.0901e+000	0.0000e+000	7.7356e+000	1.0000e+000	-3.5647e-001	7.3760e+000	0.0000e+000	0.0000e+000	0
10	9.8625e+000	0.0000e+000	9.6980e+000	1.0000e+000	-3.8676e-001	7.4910e+000	0.0000e+000	0.0000e+000	0
11	1.0570e+001	0.0000e+000	1.1672e+001	1.0000e+000	-4.1452e-001	7.6117e+000	0.0000e+000	0.0000.	

28	5.9253e+000	0.0000e+000	5.0641e+001	1.0000e+000	-2.3236e-001	1.0445e+001	0.0000e+000	0.0000e+000	0
29	3.7623e+000	0.0000e+000	5.3680e+001	1.0000e+000	-1.4754e-001	1.0639e+001	0.0000e+000	0.0000e+000	0
30	1.3349e+000	0.0000e+000	5.6958e+001	1.0000e+000	-5.2349e-002	1.0858e+001	0.0000e+000	0.0000e+000	0

Bishop_Method Fm=		1.8891957		Applied_Lambda=		0.0000			
SL#	Normal_M	ShearMob	Phi_Angle	Cohesion	SideLeft	ShearLeft	SideRight	ShearRight	
1	9.6901e-001	2.2047e+000	1.9600e+001	1.2000e+001	0.0000e+000	0.0000e+000	-2.4235e+000	0.0000e+000	
2	2.1913e+000	2.4269e+000	1.9600e+001	1.2000e+001	2.4235e+000	0.0000e+000	-5.1316e+000	0.0000e+000	
3	3.3287e+000	2.6354e+000	1.9600e+001	1.2000e+001	5.1316e+000	0.0000e+000	-8.0224e+000	0.0000e+000	
4	4.3877e+000	2.8315e+000	1.9600e+001	1.2000e+001	8.0224e+000	0.0000e+000	-1.1003e+001	0.0000e+000	
5	5.3741e+000	3.0162e+000	1.9600e+001	1.2000e+001	1.1003e+001	0.0000e+000	-1.3991e+001	0.0000e+000	
6	6.2925e+000	3.1904e+000	1.9600e+001	1.2000e+001	1.3991e+001	0.0000e+000	-1.6907e+001	0.0000e+000	
7	7.1471e+000	3.3549e+000	1.9600e+001	1.2000e+001	1.6907e+001	0.0000e+000	-1.9683e+001	0.0000e+000	
8	7.9409e+000	3.5102e+000	1.9600e+001	1.2000e+001	1.9683e+001	0.0000e+000	-2.2255e+001	0.0000e+000	
9	8.6768e+000	3.6571e+000	1.9600e+001	1.2000e+001	2.2255e+001	0.0000e+000	-2.4566e+001	0.0000e+000	
10	9.3568e+000	3.7959e+000	1.9600e+001	1.2000e+001	2.4566e+001	0.0000e+000	-2.6564e+001	0.0000e+000	
11	9.9823e+000	3.9271e+000	1.9600e+001	1.2000e+001	2.6564e+001	0.0000e+000	-2.8202e+001	0.0000e+000	
12	1.0554e+001	4.0509e+000	1.9600e+001	1.2000e+001	2.8202e+001	0.0000e+000	-2.9439e+001	0.0000e+000	
13	1.1073e+001	4.1676e+000	1.9600e+001	1.2000e+001	2.9439e+001	0.0000e+000	-3.0239e+001	0.0000e+000	
14	1.1538e+001	4.2775e+000	1.9600e+001	1.2000e+001	3.0239e+001	0.0000e+000	-3.0572e+001	0.0000e+000	
15	1.1949e+001	4.3805e+000	1.9600e+001	1.2000e+001	3.0572e+001	0.0000e+000	-3.0413e+001	0.0000e+000	
16	1.2303e+001	4.4768e+000	1.9600e+001	1.2000e+001	3.0413e+001	0.0000e+000	-2.9743e+001	0.0000e+000	
17	1.2599e+001	4.5662e+000	1.9600e+001	1.2000e+001	2.9743e+001	0.0000e+000	-2.8550e+001	0.0000e+000	
18	1.2832e+001	4.6486e+000	1.9600e+001	1.2000e+001	2.8550e+001	0.0000e+000	-2.6827e+001	0.0000e+000	
19	1.2998e+001	4.7238e+000	1.9600e+001	1.2000e+001	2.6827e+001	0.0000e+000	-2.4578e+001	0.0000e+000	
20	1.3090e+001	4.7914e+000	1.9600e+001	1.2000e+001	2.4578e+001	0.0000e+000	-2.1816e+001	0.0000e+000	
21	1.3099e+001	4.8506e+000	1.9600e+001	1.2000e+001	2.1816e+001	0.0000e+000	-1.8564e+001	0.0000e+000	
22	1.3013e+001	4.9008e+000	1.9600e+001	1.2000e+001	1.8564e+001	0.0000e+000	-1.4861e+001	0.0000e+000	
23	1.2818e+001	4.9408e+000	1.9600e+001	1.2000e+001	1.4861e+001	0.0000e+000	-1.0763e+001	0.0000e+000	
24	1.2494e+001	4.9691e+000	1.9600e+001	1.2000e+001	1.0763e+001	0.0000e+000	-6.3489e+000	0.0000e+000	
25	1.0977e+001	4.6768e+000	1.9600e+001	1.2000e+001	6.3489e+000	0.0000e+000	-2.2315e+000	0.0000e+000	
26	9.1863e+000	4.4545e+000	1.9600e+001	1.2000e+001	2.2315e+000	0.0000e+000	1.2230e+000	0.0000e+000	
27	7.0906e+000	4.1980e+000	1.9600e+001	1.2000e+001	-1.2230e+000	0.0000e+000	3.6894e+000	0.0000e+000	
28	4.5920e+000	3.8972e+000	1.9600e+001	1.2000e+001	-3.6894e+000	0.0000e+000	4.7396e+000	0.0000e+000	
29	1.5413e+000	3.5366e+000	1.9600e+001	1.2000e+001	-4.7396e+000	0.0000e+000	3.7891e+000	0.0000e+000	
30	-2.3048e+000	3.0918e+000	1.9600e+001	1.2000e+001	-3.7891e+000	0.0000e+000	8.8818e-015	0.0000e+000	

Slip_Surface_Summary							
Analysis	Volume	Weight	Res_Moment	Act_Moment	Res_Force	Act_Force	FOS
Bishop_Method	1.4989e+001	2.6980e+002	2.0796e+003	1.1008e+003			1.8891957

4A-2	"Sezione a" - Verifica locale scavi di riprofilatura	Statiche	Golena	2.711
------	--	----------	--------	-------

Center_X		Center_Y		Radius	Slip_Surface		Method			
1.040044e+002		1.127312e+001		1.102697e+001	302		1			
SL#	X_Left	Y_L_Top	Y_L_Bottom	X_Right	Y_R_Top	Y_R_Bottom	Mid_Height			
1	9.687718e+001	2.859039e+000	2.859029e+000	9.740098e+001	2.874949e+000	2.441987e+000	2.229778e-001			
2	9.740098e+001	2.874949e+000	2.441987e+000	9.792479e+001	2.890860e+000	2.073537e+000	6.308274e-001			
3	9.792479e+001	2.890860e+000	2.073537e+000	9.844859e+001	2.906770e+000	1.748047e+000	9.930990e-001			
4	9.844859e+001	2.906770e+000	1.748047e+000	9.897239e+001	2.922680e+000	1.461242e+000	1.314690e+000			
5	9.897239e+001	2.922680e+000	1.461242e+000	9.949620e+001	2.938590e+000	1.209813e+000	1.599353e+000			
6	9.949620e+001	2.938590e+000	1.209813e+000	1.000200e+002	2.954500e+000	9.911647e-001	1.850014e+000			
7	1.000200e+002	2.954500e+000	9.911647e-001	1.005735e+002	3.118455e+000	7.934743e-001	2.148317e+000			
8	1.005735e+002	3.118455e+000	7.934743e-001	1.011270e+002	3.282410e+000	6.281861e-001	2.493551e+000			
9	1.011270e+002	3.282410e+000	6.281861e-001	1.016805e+002	3.446365e+000	4.938094e-001	2.807175e+000			
10	1.016805e+002	3.446365e+000	4.938094e-001	1.022340e+002	3.610320e+000	3.891992e-001	3.090499e+000			
11	1.022340e+002	3.610320e+000	3.891992e-001	1.027875e+002	3.774275e+000	3.135031e-001	3.344518e+000			
12	1.027875e+002	3.774275e+000	3.135031e-001	1.033410e+002	3.938230e+000	2.661245e-001	3.569950e+000			
13	1.033410e+002	3.938230e+000	2.661245e-001	1.038945e+002	4.102185e+000	2.466985e-001	3.767276e+000			
14	1.038945e+002	4.102185e+000	2.466985e-001	1.044480e+002	4.266140e+000	2.550772e-001	3.936749e+000			
15	1.044480e+002	4.266140e+000	2.550772e-001	1.050015e+002	4.430095e+000	2.913241e-001	4.078413e+000			
16	1.050015e+002	4.430095e+000	2.913241e-001	1.055550e+002	4.594050e+000	3.557170e-001	4.192096e+000			
17	1.055550e+002	4.594050e+000	3.557170e-001	1.061085e+002	4.758005e+000	4.487580e-001	4.277412e+000			
18	1.061085e+002	4.758005e+000	4.487580e-001	1.066620e+002	4.921960e+000	5.711944e-001	4.333738e+000			
19	1.066620e+002	4.921960e+000	5.711944e-001	1.072155e+002	5.085915e+000	7.240496e-001	4.360194e+000			
20	1.072155e+002	5.085915e+000	7.240496e-001	1.077690e+002	5.249870e+000	9.086694e-001	4.355602e+000			
21	1.077690e+002	5.249870e+000	9.086694e-001	1.083225e+002	5.413825e+000	1.126788e+000	4.318432e+000			
22	1.083225e+002	5.413825e+000	1.126788e+000	1.088760e+002	5.577780e+000	1.380620e+000	4.246724e+000			
23	1.088760e+002	5.577780e+000	1.380620e+000	1.094295e+002	5.741735e+000	1.672998e+000	4.137973e+000			
24	1.094295e+002	5.741735e+000	1.672998e+000	1.099830e+002	5.905690e+000	2.007571e+000	3.988969e+000			
25	1.099830e+002	5.905690e+000	2.007571e+000	1.105365e+002	6.069645e+000	2.389105e+000	3.795552e+000			
26	1.105365e+002	6.069645e+000	2.389105e+000	1.110900e+002	6.233600e+000	2.823959e+000	3.552234e+000			
27	1.110900e+002	6.233600e+000	2.823959e+000	1.116361e+002	6.236818e+000	3.313806e+000	3.174523e+000			
28	1.116361e+002	6.236818e+000	3.313806e+000	1.121823e+002	6.240036e+000	3.876059e+000	2.653490e+000			
29	1.121823e+002	6.240036e+000	3.876059e+000	1.127284e+002	6.243254e+000	4.528803e+000	2.052008e+000			
30	1.127284e+002	6.243254e+000	4.528803e+000	1.132745e+002	6.246472e+000	5.301638e+000	1.347225e+000			
31	1.132745e+002	6.246472e+000	5.301638e+000	1.138207e+002	6.249690e+000	6.249690e+000	4.995684e-001			
SL#	L_Load_X	L_Load_Y	A_Load_X	A_Load_Y	P_Load_X	P_Load_Y	A_Modifier	AS_Load_X	AS_Load_Y	
1	0.0000e+000	0.0000e+000	0.0000e+000	0.0000e+000	0.0000e+000	0.0000e+000	1.0000e+000	0.0000e+000	0.0000e+000	
2	0.0000e+000	0.0000e+000	0.0000e+000	0.0000e+000	0.0000e+000	0.0000e+000	1.0000e+000	0.0000e+000	0.0000e+000	
3	0.0000e+000	0.0000e+000	0.0000e+000	0.0000e+000	0.0000e+000	0.0000e+000	1.0000e+000	0.0000e+000	0.0000e+000	
4	0.0000e+000	0.0000e+000	0.0000e+000	0.0000e+000	0.0000e+000	0.0000e+000	1.0000e+000	0.0000e+000	0.0000e+000	
5	0.0000e+000	0.0000e+000	0.0000e+000	0.0000e+000	0.0000e+000	0.0000e+000	1.0000e+000	0.0000e+000	0.0000e+000	
6	0.0000e+000	0.0000e+000	0.0000e+000	0.0000e+000	0.0000e+000	0.0000e+000	1.0000e+000	0.0000e+000	0.0000e+000	
7	0.0000e+000	0.0000e+000	0.0000e+000	0.0000e+000	0.0000e+000	0.0000e+000	1.0000e+000	0.0000e+000	0.0000e+000	
8	0.0000e+000	0.0000e+000	0.0000e+000	0.0000e+000	0.0000e+000	0.0000e+000	1.0000e+000	0.0000e+000	0.0000e+000	
9	0.0000e+000	0.0000e+000	0.0000e+000	0.0000e+000	0.0000e+000	0.0000e+000	1.0000e+000	0.0000e+000	0.0000e+000	
10	0.0000e+000	0.0000e+000	0.0000e+000	0.0000e+000	0.0000e+000	0.0000e+000	1.0000e+000	0.0000e+000	0.0000e+000	
11	0.0000e+000	0.0000e+000	0.0000e+000	0.0000e+000	0.0000e+000	0.0000e+000	1.0000e+000	0.0000e+000	0.0000e+000	
12	0.0000e+000	0.0000e+000	0.0000e+000	0.0000e+000	0.0000e+000	0.0000e+000	1.0000e+000	0.0000e+000	0.0000e+000	
13	0.0000e+000	0.0000e+000	0.0000e+000	0.0000e+000	0.0000e+000	0.0000e+000	1.0000e+000	0.0000e+000	0.0000e+000	
14	0.0000e+000	0.0000e+000	0.0000e+000	0.0000e+000	0.0000e+000	0.0000e+000	1.0000e+000	0.0000e+000	0.0000e+000	
15	0.0000e+000	0.0000e+000	0.0000e+000	0.0000e+000	0.0000e+000	0.0000e+000	1.0000e+000	0.0000e+000	0.0000e+000	
16	0.0000e+000	0.0000e+000	0.0000e+000	0.0000e+000	0.0000e+000	0.0000e+000	1.0000e+000	0.0000e+000	0.0000e+000	
17	0.0000e+000	0.0000e+000	0.0000e+000	0.0000e+000	0.0000e+000	0.0000e+000	1.0000e+000	0.0000e+000	0.0000e+000	
18	0.0000e+000	0.0000e+000	0.0000e+000	0.0000e+000	0.0000e+000	0.0000e+000	1.0000e+000	0.0000e+000	0.0000e+000	
19	0.0000e+000	0.0000e+000	0.0000e+000	0.0000e+000	0.0000e+000	0.0000e+000	1.0000e+000	0.0000e+000	0.0000e+000	
20	0.0000e+000	0.0000e+000	0.0000e+000	0.0000e+000	0.0000e+000	0.0000e+000	1.0000e+000	0.0000e+000	0.0000e+000	
21	0.0000e+000	0.0000e+000	0.0000e+000	0.0000e+000	0.0000e+000	0.0000e+000	1.0000e+000	0.0000e+000	0.0000e+000	
22	0.0000e+000	0.0000e+000	0.0000e+000	0.0000e+000	0.0000e+000	0.0000e+000	1.0000e+000	0.0000e+000	0.0000e+000	
23	0.0000e+000	0.0000e+000	0.0000e+000	0.0000e+000	0.0000e+000	0.0000e+000	1.0000e+000	0.0000e+000	0.0000e+000	
24	0.0000e+000	0.0000e+000	0.0000e+000	0.0000e+000	0.0000e+000	0.0000e+000	1.0000e+000	0.0000e+000	0.0000e+000	
25	0.0000e+000	0.0000e+000	0.0000e+000	0.0000e+000	0.0000e+000	0.0000e+000	1.0000e+000	0.0000e+000	0.0000e+000	
26	0.0000e+000	0.0000e+000	0.0000e+000	0.0000e+000	0.0000e+000	0.0000e+000	1.0000e+000	0.0000e+000	0.0000e+000	
27	0.0000e+000	0.0000e+000	0.0000e+000	0.0000e+000	0.0000e+000	0.0000e+000	1.0000e+000	0.0000e+000	0.0000e+000	
28	0.0000e+000	0.0000e+000	0.0000e+000	0.0000e+000	0.0000e+000	0.0000e+000	1.0000e+000	0.0000e+000	0.0000e+000	
29	0.0000e+000	0.0000e+000	0.0000e+000	0.0000e+000	0.0000e+000	0.0000e+000	1.0000e+000	0.0000e+000	0.0000e+000	
30	0.0000e+000	0.0000e+000	0.0000e+000	0.0000e+000	0.0000e+000	0.0000e+000	1.0000e+000	0.0000e+000	0.0000e+000	
31	0.0000e+000	0.0000e+000	0.0000e+000	0.0000e+000	0.0000e+000	0.0000e+000	1.0000e+000	0.0000e+000	0.0000e+000	
SL#	Weight	Pore_Water	Alpha	Force_Fn.	Seismic_F	Seismic_Y	Pore_Air	Phi_B	Liquified	
1	2.1023e+000	1.4644e+000	-3.8526e+001	1.0000e+000	0.0000e+000	0.0000e+000	0.0000e+000	0.0000e+000	0	
2	5.9477e+000	3.9625e+000	-3.5123e+001	1.0000e+000	0.0000e+000	0.0000e+000	0.0000e+000	0.0000e+000	0	
3	9.3634e+000	6.0070e+000	-3.1857e+001	1.0000e+000	0.0000e+000	0.0000e+000	0.0000e+000	0.0000e+000	0	
4	1.2396e+001	7.7005e+000	-2.8703e+001	1.0000e+000	0.0000e+000	0.0000e+000	0.0000e+000	0.0000e+000	0	
5	1.5079e+001	9.1143e+000	-2.5641e+001	1.0000e+000	0.0000e+000	0.0000e+000	0.0000e+000	0.0000e+000	0	
6	1.7443e+001	1.0299e+001	-2.2657e+001	1.0000e+000	0.0000e+000	0.0000e+000	0.0000e+000	0.0000e+000	0	
7	2.1404e+001	1.2384e+001	-1.9655e+001	1.0000e+000	0.0000e+000	0.0000e+000	0.0000e+000	0.0000e+000	0	
8	2.4843e+001	1.4128e+001	-1.6627e+001	1.0000e+000	0.0000e+000	0.0000e+000	0.0000e+000	0.0000e+000	0	
9	2.7968e+001	1.5682e+001	-1.3646e+001	1.0000e+000	0.0000e+000	0.0000e+000	0.0000e+000	0.0000e+000	0	
10	3.0791e+001	1.7075e+001	-1.0703e+001	1.0000e+000						

28	2.6085e+001	2.0365e+001	4.5833e+001	1.0000e+000	0.0000e+000	0.0000e+000	0.0000e+000	0.0000e+000	0
29	2.0172e+001	1.7064e+001	5.0082e+001	1.0000e+000	0.0000e+000	0.0000e+000	0.0000e+000	0.0000e+000	0
30	1.3244e+001	1.2402e+001	5.4753e+001	1.0000e+000	0.0000e+000	0.0000e+000	0.0000e+000	0.0000e+000	0
31	4.9110e+000	5.2071e+000	6.0055e+001	1.0000e+000	0.0000e+000	0.0000e+000	0.0000e+000	0.0000e+000	0

Bishop_Method_Fm= 2.7112942			Applied_Lambda= 0.0000					
SL#	Normal_M	ShearMob	Phi_Angle	Cohesion	SideLeft	ShearLeft	SideRight	ShearRight
1	6.3439e+000	4.5926e+000	1.9600e+001	1.6000e+001	0.0000e+000	0.0000e+000	-8.2937e+000	0.0000e+000
2	1.0539e+001	4.6433e+000	1.9600e+001	1.6000e+001	8.2937e+000	0.0000e+000	-1.8865e+001	0.0000e+000
3	1.3932e+001	4.6806e+000	1.9600e+001	1.6000e+001	1.8865e+001	0.0000e+000	-3.0872e+001	0.0000e+000
4	1.6710e+001	4.7078e+000	1.9600e+001	1.6000e+001	3.0872e+001	0.0000e+000	-4.3677e+001	0.0000e+000
5	1.8996e+001	4.7269e+000	1.9600e+001	1.6000e+001	4.3677e+001	0.0000e+000	-5.6785e+001	0.0000e+000
6	2.0880e+001	4.7395e+000	1.9600e+001	1.6000e+001	5.6785e+001	0.0000e+000	-6.9808e+001	0.0000e+000
7	2.4537e+001	5.0649e+000	1.9600e+001	1.6000e+001	6.9808e+001	0.0000e+000	-8.3458e+001	0.0000e+000
8	2.7469e+001	5.1614e+000	1.9600e+001	1.6000e+001	8.3458e+001	0.0000e+000	-9.6883e+001	0.0000e+000
9	3.0055e+001	5.2492e+000	1.9600e+001	1.6000e+001	9.6883e+001	0.0000e+000	-1.0969e+002	0.0000e+000
10	3.2343e+001	5.3298e+000	1.9600e+001	1.6000e+001	1.0969e+002	0.0000e+000	-1.2155e+002	0.0000e+000
11	3.4371e+001	5.4044e+000	1.9600e+001	1.6000e+001	1.2155e+002	0.0000e+000	-1.3217e+002	0.0000e+000
12	3.6166e+001	5.4738e+000	1.9600e+001	1.6000e+001	1.3217e+002	0.0000e+000	-1.4131e+002	0.0000e+000
13	3.7751e+001	5.5390e+000	1.9600e+001	1.6000e+001	1.4131e+002	0.0000e+000	-1.4878e+002	0.0000e+000
14	3.9142e+001	5.6005e+000	1.9600e+001	1.6000e+001	1.4878e+002	0.0000e+000	-1.5440e+002	0.0000e+000
15	4.0350e+001	5.6589e+000	1.9600e+001	1.6000e+001	1.5440e+002	0.0000e+000	-1.5802e+002	0.0000e+000
16	4.1383e+001	5.7146e+000	1.9600e+001	1.6000e+001	1.5802e+002	0.0000e+000	-1.5954e+002	0.0000e+000
17	4.2244e+001	5.7681e+000	1.9600e+001	1.6000e+001	1.5954e+002	0.0000e+000	-1.5884e+002	0.0000e+000
18	4.2933e+001	5.8197e+000	1.9600e+001	1.6000e+001	1.5884e+002	0.0000e+000	-1.5589e+002	0.0000e+000
19	4.3446e+001	5.8698e+000	1.9600e+001	1.6000e+001	1.5589e+002	0.0000e+000	-1.5062e+002	0.0000e+000
20	4.3771e+001	5.9186e+000	1.9600e+001	1.6000e+001	1.5062e+002	0.0000e+000	-1.4304e+002	0.0000e+000
21	4.3893e+001	5.9665e+000	1.9600e+001	1.6000e+001	1.4304e+002	0.0000e+000	-1.3316e+002	0.0000e+000
22	4.3789e+001	6.0138e+000	1.9600e+001	1.6000e+001	1.3316e+002	0.0000e+000	-1.2106e+002	0.0000e+000
23	4.3423e+001	6.0608e+000	1.9600e+001	1.6000e+001	1.2106e+002	0.0000e+000	-1.0684e+002	0.0000e+000
24	4.2746e+001	6.1079e+000	1.9600e+001	1.6000e+001	1.0684e+002	0.0000e+000	-9.0678e+001	0.0000e+000
25	4.1686e+001	6.1555e+000	1.9600e+001	1.6000e+001	9.0678e+001	0.0000e+000	-7.2843e+001	0.0000e+000
26	4.0132e+001	6.2043e+000	1.9600e+001	1.6000e+001	7.2843e+001	0.0000e+000	-5.3719e+001	0.0000e+000
27	3.6435e+001	6.1165e+000	1.9600e+001	1.6000e+001	5.3719e+001	0.0000e+000	-3.4759e+001	0.0000e+000
28	3.1209e+001	6.0507e+000	1.9600e+001	1.6000e+001	3.4759e+001	0.0000e+000	-1.7439e+001	0.0000e+000
29	2.4296e+001	5.9735e+000	1.9600e+001	1.6000e+001	1.7439e+001	0.0000e+000	-3.5353e+000	0.0000e+000
30	1.4630e+001	5.8787e+000	1.9600e+001	1.6000e+001	3.5353e+000	0.0000e+000	4.0584e+000	0.0000e+000
31	-1.5244e-001	5.7553e+000	1.9600e+001	1.6000e+001	-4.0584e+000	0.0000e+000	-8.8818e-015	0.0000e+000

Slip_Surface_Summary							
Analysis	Volume	Weight	Res_Moment	Act_Moment	Res_Force	Act_Force	FOS
Bishop Method	5.0174e+001	9.0314e+002	5.1408e+003	1.8961e+003			2.7112942

Center_X		Center_Y	Radius	Slip_Surface		Method			
1.050214e+002		1.333974e+001	1.345416e+001	435	1				
SL#	X_Left	Y_L_Top	Y_L_Bottom	X_Right	Y_R_Top	Y_R_Bottom	Mid_Height		
1	9.659584e+001	2.850494e+000	2.850484e+000	9.728067e+001	2.871295e+000	2.335400e+000	2.764851e-001		
2	9.728067e+001	2.871295e+000	2.335400e+000	9.796550e+001	2.892096e+000	1.884230e+000	7.793640e-001		
3	9.796550e+001	2.892096e+000	1.884230e+000	9.865033e+001	2.912898e+000	1.489680e+000	1.222241e+000		
4	9.865033e+001	2.912898e+000	1.489680e+000	9.933517e+001	2.933699e+000	1.146252e+000	1.611434e+000		
5	9.933517e+001	2.933699e+000	1.146252e+000	1.000200e+002	2.954500e+000	8.497282e-001	1.951749e+000		
6	1.000200e+002	2.954500e+000	8.497282e-001	1.006712e+002	3.147388e+000	6.082848e-001	2.326718e+000		
7	1.006712e+002	3.147388e+000	6.082848e-001	1.013224e+002	3.340276e+000	4.040743e-001	2.742188e+000		
8	1.013224e+002	3.340276e+000	4.040743e-001	1.019735e+002	3.533165e+000	2.353559e-001	3.121349e+000		
9	1.019735e+002	3.533165e+000	2.353559e-001	1.026247e+002	3.726053e+000	1.007727e-001	3.465740e+000		
10	1.026247e+002	3.726053e+000	1.007727e-001	1.032759e+002	3.918941e+000	-7.084574e-004	3.776549e+000		
11	1.032759e+002	3.918941e+000	-7.084574e-004	1.039271e+002	4.111829e+000	-6.983920e-002	4.054666e+000		
12	1.039271e+002	4.111829e+000	-6.983920e-002	1.045782e+002	4.304718e+000	-1.071184e-001	4.300712e+000		
13	1.045782e+002	4.304718e+000	-1.071184e-001	1.052294e+002	4.497606e+000	-1.128110e-001	4.515067e+000		
14	1.052294e+002	4.497606e+000	-1.128110e-001	1.058806e+002	4.690494e+000	-8.695701e-002	4.697883e+000		
15	1.058806e+002	4.690494e+000	-8.695701e-002	1.065318e+002	4.883382e+000	-2.937348e-002	4.849090e+000		
16	1.065318e+002	4.883382e+000	-2.937348e-002	1.071829e+002	5.076271e+000	6.035234e-002	4.968390e+000		
17	1.071829e+002	5.076271e+000	6.035234e-002	1.078341e+002	5.269159e+000	1.828781e-001	5.055251e+000		
18	1.078341e+002	5.269159e+000	1.828781e-001	1.084853e+002	5.462047e+000	3.391310e-001	5.108884e+000		
19	1.084853e+002	5.462047e+000	3.391310e-001	1.091365e+002	5.654935e+000	5.303454e-001	5.128214e+000		
20	1.091365e+002	5.654935e+000	5.303454e-001	1.097876e+002	5.847824e+000	7.581151e-001	5.11834e+000		
21	1.097876e+002	5.847824e+000	7.581151e-001	1.104388e+002	6.040712e+000	1.024468e+000	5.057945e+000		
22	1.104388e+002	6.040712e+000	1.024468e+000	1.110900e+002	6.233600e+000	1.331972e+000	4.964265e+000		
23	1.110900e+002	6.233600e+000	1.331972e+000	1.117619e+002	6.237559e+000	1.695873e+000	4.727827e+000		
24	1.117619e+002	6.237559e+000	1.695873e+000	1.124339e+002	6.241518e+000	2.111660e+000	4.342595e+000		
25	1.124339e+002	6.241518e+000	2.111660e+000	1.131058e+002	6.245477e+000	2.585347e+000	3.902678e+000		
26	1.131058e+002	6.245477e+000	2.585347e+000	1.137777e+002	6.249436e+000	3.124988e+000	3.401140e+000		
27	1.137777e+002	6.249436e+000	3.124988e+000	1.144497e+002	6.253396e+000	3.741700e+000	2.828562e+000		
28	1.144497e+002	6.253396e+000	3.741700e+000	1.151216e+002	6.257355e+000	4.451513e+000	2.171679e+000		
29	1.151216e+002	6.257355e+000	4.451513e+000	1.157935e+002	6.261314e+000	5.278981e+000	1.410830e+000		
30	1.157935e+002	6.261314e+000	5.278981e+000	1.164655e+002	6.265273e+000	6.265273e+000	5.146553e-001		
SL#	L_Load_X	L_Load_Y	A_Load_X	A_Load_Y	P_Load_X	P_Load_Y	A_Modifier	AS_Load_X	AS_Load_Y
1	0.0000e+000	0.0000e+000	0.0000e+000	0.0000e+000	0.0000e+000	0.0000e+000	1.0000e+000	0.0000e+000	0.0000e+000
2	0.0000e+000	0.0000e+000	0.0000e+000	0.0000e+000	0.0000e+000	0.0000e+000	1.0000e+000	0.0000e+000	0.0000e+000
3	0.0000e+000	0.0000e+000	0.0000e+000	0.0000e+000	0.0000e+000	0.0000e+000	1.0000e+000	0.0000e+000	0.0000e+000
4	0.0000e+000	0.0000e+000	0.0000e+000	0.0000e+000	0.0000e+000	0.0000e+000	1.0000e+000	0.0000e+000	0.0000e+000
5	0.0000e+000	0.0000e+000	0.0000e+000	0.0000e+000	0.0000e+000	0.0000e+000	1.0000e+000	0.0000e+000	0.0000e+000
6	0.0000e+000	0.0000e+000	0.0000e+000	0.0000e+000	0.0000e+000	0.0000e+000	1.0000e+000	0.0000e+000	0.0000e+000
7	0.0000e+000	0.0000e+000	0.0000e+000	0.0000e+000	0.0000e+000	0.0000e+000	1.0000e+000	0.0000e+000	0.0000e+000
8	0.0000e+000	0.0000e+000	0.0000e+000	0.0000e+000	0.0000e+000	0.0000e+000	1.0000e+000	0.0000e+000	0.0000e+000
9	0.0000e+000	0.0000e+000	0.0000e+000	0.0000e+000	0.0000e+000	0.0000e+000	1.0000e+000	0.0000e+000	0.0000e+000
10	0.0000e+000	0.0000e+000	0.0000e+000	0.0000e+000	0.0000e+000	0.0000e+000	1.0000e+000	0.0000e+000	0.0000e+000
11	0.0000e+000	0.0000e+000	0.0000e+000	0.0000e+000	0.0000e+000	0.0000e+000	1.0000e+000	0.0000e+000	0.0000e+000
12	0.0000e+000	0.0000e+000	0.0000e+000	0.0000e+000	0.0000e+000	0.0000e+000	1.0000e+000	0.0000e+000	0.0000e+000
13	0.0000e+000	0.0000e+000	0.0000e+000	0.0000e+000	0.0000e+000	0.0000e+000	1.0000e+000	0.0000e+000	0.0000e+000
14	0.0000e+000	0.0000e+000	0.0000e+000	0.0000e+000	0.0000e+000	0.0000e+000	1.0000e+000	0.0000e+000	0.0000e+000
15	0.0000e+000	0.0000e+000	0.0000e+000	0.0000e+000	0.0000e+000	0.0000e+000	1.0000e+000	0.0000e+000	0.0000e+000
16	0.0000e+000	0.0000e+000	0.0000e+000	0.0000e+000	0.0000e+000	0.0000e+000	1.0000e+000	0.0000e+000	0.0000e+000
17	0.0000e+000	0.0000e+000	0.0000e+000	0.0000e+000	0.0000e+000	0.0000e+000	1.0000e+000	0.0000e+000	0.0000e+000
18	0.0000e+000	0.0000e+000	0.0000e+000	0.0000e+000	0.0000e+000	0.0000e+000	1.0000e+000	0.0000e+000	0.0000e+000
19	0.0000e+000	0.0000e+000	0.0000e+000	0.0000e+000	0.0000e+000	0.0000e+000	1.0000e+000	0.0000e+000	0.0000e+000
20	0.0000e+000	0.0000e+000	0.0000e+000	0.0000e+000	0.0000e+000	0.0000e+000	1.0000e+000	0.0000e+000	0.0000e+000
21	0.0000e+000	0.0000e+000	0.0000e+000	0.0000e+000	0.0000e+000	0.0000e+000	1.0000e+000	0.0000e+000	0.0000e+000
22	0.0000e+000	0.0000e+000	0.0000e+000	0.0000e+000	0.0000e+000	0.0000e+000	1.0000e+000	0.0000e+000	0.0000e+000
23	0.0000e+000	0.0000e+000	0.0000e+000	0.0000e+000	0.0000e+000	0.0000e+000	1.0000e+000	0.0000e+000	0.0000e+000
24	0.0000e+000	0.0000e+000	0.0000e+000	0.0000e+000	0.0000e+000	0.0000e+000	1.0000e+000	0.0000e+000	0.0000e+000
25	0.0000e+000	0.0000e+000	0.0000e+000	0.0000e+000	0.0000e+000	0.0000e+000	1.0000e+000	0.0000e+000	0.0000e+000
26	0.0000e+000	0.0000e+000	0.0000e+000	0.0000e+000	0.0000e+000	0.0000e+000	1.0000e+000	0.0000e+000	0.0000e+000
27	0.0000e+000	0.0000e+000	0.0000e+000	0.0000e+000	0.0000e+000	0.0000e+000	1.0000e+000	0.0000e+000	0.0000e+000
28	0.0000e+000	0.0000e+000	0.0000e+000	0.0000e+000	0.0000e+000	0.0000e+000	1.0000e+000	0.0000e+000	0.0000e+000
29	0.0000e+000	0.0000e+000	0.0000e+000	0.0000e+000	0.0000e+000	0.0000e+000	1.0000e+000	0.0000e+000	0.0000e+000
30	0.0000e+000	0.0000e+000	0.0000e+000	0.0000e+000	0.0000e+000	0.0000e+000	1.0000e+000	0.0000e+000	0.0000e+000
SL#	Weight	Pore_Water	Alpha	Force Fn.	Seismic_F	Seismic_Y	Pore_Air	Phi_B	Liquified
1	3.4764e+000	2.3239e+000	-3.6948e+001	1.0000e+000	-1.3633e-001	2.7227e+000	0.0000e+000	0.0000e+000	0
2	9.7994e+000	6.2691e+000	-3.3377e+001	1.0000e+000	-3.8429e-001	2.4920e+000	0.0000e+000	0.0000e+000	0
3	1.5368e+001	9.4750e+000	-2.9947e+001	1.0000e+000	-6.0266e-001	2.2914e+000	0.0000e+000	0.0000e+000	0
4	2.0261e+001	1.2109e+001	-2.6633e+001	1.0000e+000	-7.9456e-001	2.1176e+000	0.0000e+000	0.0000e+000	0
5	2.4540e+001	1.4286e+001	-2.3412e+001	1.0000e+000	-9.6237e-001	1.9682e+000	0.0000e+000	0.0000e+000	0
6	2.7817e+001	1.5849e+001	-2.0344e+001	1.0000e+000	-1.0909e+000	1.8876e+000	0.0000e+000	0.0000e+000	0
7	3.2785e+001	1.8355e+001	-1.7412e+001	1.0000e+000	-1.2857e+000	1.8727e+000	0.0000e+000	0.0000e+000	0
8	3.7318e+001	2.0594e+001	-1.4526e+001	1.0000e+000	-1.4634e+000	1.8760e+000	0.0000e+000	0.0000e+000	0
9	4.1435e+001	2.2603e+001	-1.1677e+001	1.0000e+000	-1.6249e+000	1.8967e+000	0.0000e+000	0.0000e+000	0
10	4.5151e+001	2.4411e+001	-8.8579e+000	1.0000e+000	-1.7706e+000	1.9342e+000	0.0000e+000	0.0000e+000	0
11	4.8476e+001	2.6042e+001	-6.0600e+000	1.0000e+000	-1.9010e+000	1.9881e+000	0.0000e+000	0.0000e+000	0
12	5.1418e+001	2.7512e+001	-3.2766e+000	1.0000e+000	-2.0164e+000	2.0579e+000	0.0000e+000	0.0000e+000	0
13	5.3980e+001	2.8838e+001	-5.0086e-001	1.0000e+000	-2.1169e+000	2.1436e+000	0.0000e+000	0	

28	2.6791e+001	2.0612e+001	4.6570e+001	1.0000e+000	-1.0506e+000	5.1695e+000	0.0000e+000	0.0000e+000	0
29	1.7405e+001	1.4483e+001	5.0922e+001	1.0000e+000	-6.8255e-001	5.5539e+000	0.0000e+000	0.0000e+000	0
30	6.3491e+000	5.6778e+000	5.5735e+001	1.0000e+000	-2.4899e-001	6.0060e+000	0.0000e+000	0.0000e+000	0

Bishop_Method_Fm= 2.2988410 Applied_Lambda= 0.0000

SL#	Normal_M	ShearMob	Phi_Angle	Cohesion	SideLeft	ShearLeft	SideRight	ShearRight
=====	=====	=====	=====	=====	=====	=====	=====	=====
1	9.6953e+000	7.1070e+000	1.9600e+001	1.6000e+001	0.0000e+000	0.0000e+000	-1.2392e+001	0.0000e+000
2	1.6544e+001	7.3003e+000	1.9600e+001	1.6000e+001	1.2392e+001	0.0000e+000	-2.8199e+001	0.0000e+000
3	2.2026e+001	7.4458e+000	1.9600e+001	1.6000e+001	2.8199e+001	0.0000e+000	-4.6011e+001	0.0000e+000
4	2.6455e+001	7.5551e+000	1.9600e+001	1.6000e+001	4.6011e+001	0.0000e+000	-6.4773e+001	0.0000e+000
5	3.0048e+001	7.6363e+000	1.9600e+001	1.6000e+001	6.4773e+001	0.0000e+000	-8.3681e+001	0.0000e+000
6	3.2412e+001	7.3998e+000	1.9600e+001	1.6000e+001	8.3681e+001	0.0000e+000	-1.0167e+002	0.0000e+000
7	3.6742e+001	7.5984e+000	1.9600e+001	1.6000e+001	1.0167e+002	0.0000e+000	-1.1950e+002	0.0000e+000
8	4.0565e+001	7.7758e+000	1.9600e+001	1.6000e+001	1.1950e+002	0.0000e+000	-1.3661e+002	0.0000e+000
9	4.3951e+001	7.9352e+000	1.9600e+001	1.6000e+001	1.3661e+002	0.0000e+000	-1.5253e+002	0.0000e+000
10	4.6955e+001	8.0794e+000	1.9600e+001	1.6000e+001	1.5253e+002	0.0000e+000	-1.6685e+002	0.0000e+000
11	4.9620e+001	8.2104e+000	1.9600e+001	1.6000e+001	1.6685e+002	0.0000e+000	-1.7924e+002	0.0000e+000
12	5.1979e+001	8.3298e+000	1.9600e+001	1.6000e+001	1.7924e+002	0.0000e+000	-1.8939e+002	0.0000e+000
13	5.4056e+001	8.4391e+000	1.9600e+001	1.6000e+001	1.8939e+002	0.0000e+000	-1.9708e+002	0.0000e+000
14	5.5871e+001	8.5393e+000	1.9600e+001	1.6000e+001	1.9708e+002	0.0000e+000	-2.0208e+002	0.0000e+000
15	5.7437e+001	8.6313e+000	1.9600e+001	1.6000e+001	2.0208e+002	0.0000e+000	-2.0425e+002	0.0000e+000
16	5.8760e+001	8.7157e+000	1.9600e+001	1.6000e+001	2.0425e+002	0.0000e+000	-2.0344e+002	0.0000e+000
17	5.9845e+001	8.7931e+000	1.9600e+001	1.6000e+001	2.0344e+002	0.0000e+000	-1.9956e+002	0.0000e+000
18	6.0687e+001	8.8639e+000	1.9600e+001	1.6000e+001	1.9956e+002	0.0000e+000	-1.9254e+002	0.0000e+000
19	6.1278e+001	8.9283e+000	1.9600e+001	1.6000e+001	1.9254e+002	0.0000e+000	-1.8237e+002	0.0000e+000
20	6.1603e+001	8.9865e+000	1.9600e+001	1.6000e+001	1.8237e+002	0.0000e+000	-1.6905e+002	0.0000e+000
21	6.1637e+001	9.0384e+000	1.9600e+001	1.6000e+001	1.6905e+002	0.0000e+000	-1.5267e+002	0.0000e+000
22	6.1346e+001	9.0838e+000	1.9600e+001	1.6000e+001	1.5267e+002	0.0000e+000	-1.3332e+002	0.0000e+000
23	6.1280e+001	9.3248e+000	1.9600e+001	1.6000e+001	1.3332e+002	0.0000e+000	-1.1106e+002	0.0000e+000
24	5.7324e+001	9.1735e+000	1.9600e+001	1.6000e+001	1.1106e+002	0.0000e+000	-8.7597e+001	0.0000e+000
25	5.2561e+001	9.0021e+000	1.9600e+001	1.6000e+001	8.7597e+001	0.0000e+000	-6.3788e+001	0.0000e+000
26	4.6744e+001	8.8045e+000	1.9600e+001	1.6000e+001	6.3788e+001	0.0000e+000	-4.0747e+001	0.0000e+000
27	3.9497e+001	8.5721e+000	1.9600e+001	1.6000e+001	4.0747e+001	0.0000e+000	-2.0002e+001	0.0000e+000
28	3.0212e+001	8.2913e+000	1.9600e+001	1.6000e+001	2.0002e+001	0.0000e+000	-3.7339e+000	0.0000e+000
29	1.7833e+001	7.9397e+000	1.9600e+001	1.6000e+001	3.7339e+000	0.0000e+000	4.7541e+000	0.0000e+000
30	3.0258e-001	7.4764e+000	1.9600e+001	1.6000e+001	-4.7541e+000	0.0000e+000	-3.9080e-014	0.0000e+000

Slip_Surface_Summary

Analysis	Volume	Weight	Res_Moment	Act_Moment	Res_Force	Act_Force	FOS
=====	=====	=====	=====	=====	=====	=====	=====
Bishop_Method	6.7352e+001	1.2123e+003	7.7006e+003	3.3498e+003			2.2988410

4A-3	"Sezione a" - Verifica globale argine-scavi	Statiche	Golena	2.943
------	---	----------	--------	-------

Center_X		Center_Y		Radius	Slip_Surface	Method			
1.156845e+002		4.750630e+001		5.415166e+001	704	1			
SL#	X_Left	Y_L_Top	Y_L_Bottom	X_Right	Y_R_Top	Y_R_Bottom	Mid_Height		
1	8.554848e+001	2.514939e+000	2.514929e+000	8.796040e+001	2.588199e+000	9.898887e-001	8.213969e-001		
2	8.796040e+001	2.588199e+000	9.898887e-001	9.037232e+001	2.661459e+000	-3.653593e-001	2.332833e+000		
3	9.037232e+001	2.661459e+000	-3.653593e-001	9.278424e+001	2.734720e+000	-1.564876e+000	3.681916e+000		
4	9.278424e+001	2.734720e+000	-1.564876e+000	9.519616e+001	2.807980e+000	-2.619842e+000	4.881171e+000		
5	9.519616e+001	2.807980e+000	-2.619842e+000	9.760808e+001	2.881240e+000	-3.539221e+000	5.940602e+000		
6	9.760808e+001	2.881240e+000	-3.539221e+000	1.000200e+002	2.954500e+000	-4.330228e+000	6.868248e+000		
7	1.000200e+002	2.954500e+000	-4.330228e+000	1.022340e+002	3.610320e+000	-4.948311e+000	7.934344e+000		
8	1.022340e+002	3.610320e+000	-4.948311e+000	1.044480e+002	4.266140e+000	-5.466742e+000	9.158016e+000		
9	1.044480e+002	4.266140e+000	-5.466742e+000	1.066620e+002	4.921960e+000	-5.888425e+000	1.028357e+001		
10	1.066620e+002	4.921960e+000	-5.888425e+000	1.088760e+002	5.577780e+000	-6.215637e+000	1.131359e+001		
11	1.088760e+002	5.577780e+000	-6.215637e+000	1.110900e+002	6.233600e+000	-6.450097e+000	1.225006e+001		
12	1.110900e+002	6.233600e+000	-6.450097e+000	1.133925e+002	6.247167e+000	-6.596832e+000	1.277616e+001		
13	1.133925e+002	6.247167e+000	-6.596832e+000	1.156950e+002	6.260733e+000	-6.645358e+000	1.288729e+001		
14	1.156950e+002	6.260733e+000	-6.645358e+000	1.179975e+002	6.274300e+000	-6.595938e+000	1.290041e+001		
15	1.179975e+002	6.274300e+000	-6.595938e+000	1.203000e+002	6.287867e+000	-6.448304e+000	1.281552e+001		
16	1.203000e+002	6.287867e+000	-6.448304e+000	1.226025e+002	6.301433e+000	-6.201646e+000	1.263208e+001		
17	1.226025e+002	6.301433e+000	-6.201646e+000	1.249050e+002	6.315000e+000	-5.854590e+000	1.234899e+001		
18	1.249050e+002	6.315000e+000	-5.854590e+000	1.272075e+002	6.328567e+000	-5.405160e+000	1.196460e+001		
19	1.272075e+002	6.328567e+000	-5.405160e+000	1.295100e+002	6.342133e+000	-4.850722e+000	1.147661e+001		
20	1.295100e+002	6.342133e+000	-4.850722e+000	1.318125e+002	6.355700e+000	-4.187895e+000	1.088202e+001		
21	1.318125e+002	6.355700e+000	-4.187895e+000	1.341150e+002	6.369267e+000	-3.412447e+000	1.017703e+001		
22	1.341150e+002	6.369267e+000	-3.412447e+000	1.364175e+002	6.382833e+000	-2.519142e+000	9.356949e+000		
23	1.364175e+002	6.382833e+000	-2.519142e+000	1.387200e+002	6.396400e+000	-1.501535e+000	8.415950e+000		
24	1.387200e+002	6.396400e+000	-1.501535e+000	1.413700e+002	7.923600e+000	-1.660951e-001	8.016580e+000		
25	1.413700e+002	7.923600e+000	-1.660951e-001	1.440200e+002	9.450800e+000	1.359777e+000	8.115270e+000		
26	1.440200e+002	9.450800e+000	1.359777e+000	1.466700e+002	1.097800e+001	3.095705e+000	8.014357e+000		
27	1.466700e+002	1.097800e+001	3.095705e+000	1.487503e+002	1.097800e+001	4.622090e+000	7.138164e+000		
28	1.487503e+002	1.097800e+001	4.622090e+000	1.508306e+002	1.097800e+001	6.309763e+000	5.533404e+000		
29	1.508306e+002	1.097800e+001	6.309763e+000	1.515100e+002	1.097800e+001	6.899211e+000	4.375986e+000		
30	1.515100e+002	1.097800e+001	6.899211e+000	1.537799e+002	9.627496e+000	9.020649e+000	2.733317e+000		
31	1.537799e+002	9.627496e+000	9.020649e+000	1.541604e+002	9.401088e+000	9.401078e+000	3.043684e-001		
SL#	L_Load_X	L_Load_Y	A_Load_X	A_Load_Y	P_Load_X	P_Load_Y	A_Modifier	AS_Load_X	AS_Load_Y
1	0.0000e+000	0.0000e+000	0.0000e+000	0.0000e+000	0.0000e+000	0.0000e+000	1.0000e+000	0.0000e+000	0.0000e+000
2	0.0000e+000	0.0000e+000	0.0000e+000	0.0000e+000	0.0000e+000	0.0000e+000	1.0000e+000	0.0000e+000	0.0000e+000
3	0.0000e+000	0.0000e+000	0.0000e+000	0.0000e+000	0.0000e+000	0.0000e+000	1.0000e+000	0.0000e+000	0.0000e+000
4	0.0000e+000	0.0000e+000	0.0000e+000	0.0000e+000	0.0000e+000	0.0000e+000	1.0000e+000	0.0000e+000	0.0000e+000
5	0.0000e+000	0.0000e+000	0.0000e+000	0.0000e+000	0.0000e+000	0.0000e+000	1.0000e+000	0.0000e+000	0.0000e+000
6	0.0000e+000	0.0000e+000	0.0000e+000	0.0000e+000	0.0000e+000	0.0000e+000	1.0000e+000	0.0000e+000	0.0000e+000
7	0.0000e+000	0.0000e+000	0.0000e+000	0.0000e+000	0.0000e+000	0.0000e+000	1.0000e+000	0.0000e+000	0.0000e+000
8	0.0000e+000	0.0000e+000	0.0000e+000	0.0000e+000	0.0000e+000	0.0000e+000	1.0000e+000	0.0000e+000	0.0000e+000
9	0.0000e+000	0.0000e+000	0.0000e+000	0.0000e+000	0.0000e+000	0.0000e+000	1.0000e+000	0.0000e+000	0.0000e+000
10	0.0000e+000	0.0000e+000	0.0000e+000	0.0000e+000	0.0000e+000	0.0000e+000	1.0000e+000	0.0000e+000	0.0000e+000
11	0.0000e+000	0.0000e+000	0.0000e+000	0.0000e+000	0.0000e+000	0.0000e+000	1.0000e+000	0.0000e+000	0.0000e+000
12	0.0000e+000	0.0000e+000	0.0000e+000	0.0000e+000	0.0000e+000	0.0000e+000	1.0000e+000	0.0000e+000	0.0000e+000
13	0.0000e+000	0.0000e+000	0.0000e+000	0.0000e+000	0.0000e+000	0.0000e+000	1.0000e+000	0.0000e+000	0.0000e+000
14	0.0000e+000	0.0000e+000	0.0000e+000	0.0000e+000	0.0000e+000	0.0000e+000	1.0000e+000	0.0000e+000	0.0000e+000
15	0.0000e+000	0.0000e+000	0.0000e+000	0.0000e+000	0.0000e+000	0.0000e+000	1.0000e+000	0.0000e+000	0.0000e+000
16	0.0000e+000	0.0000e+000	0.0000e+000	0.0000e+000	0.0000e+000	0.0000e+000	1.0000e+000	0.0000e+000	0.0000e+000
17	0.0000e+000	0.0000e+000	0.0000e+000	0.0000e+000	0.0000e+000	0.0000e+000	1.0000e+000	0.0000e+000	0.0000e+000
18	0.0000e+000	0.0000e+000	0.0000e+000	0.0000e+000	0.0000e+000	0.0000e+000	1.0000e+000	0.0000e+000	0.0000e+000
19	0.0000e+000	0.0000e+000	0.0000e+000	0.0000e+000	0.0000e+000	0.0000e+000	1.0000e+000	0.0000e+000	0.0000e+000
20	0.0000e+000	0.0000e+000	0.0000e+000	0.0000e+000	0.0000e+000	0.0000e+000	1.0000e+000	0.0000e+000	0.0000e+000
21	0.0000e+000	0.0000e+000	0.0000e+000	0.0000e+000	0.0000e+000	0.0000e+000	1.0000e+000	0.0000e+000	0.0000e+000
22	0.0000e+000	0.0000e+000	0.0000e+000	0.0000e+000	0.0000e+000	0.0000e+000	1.0000e+000	0.0000e+000	0.0000e+000
23	0.0000e+000	0.0000e+000	0.0000e+000	0.0000e+000	0.0000e+000	0.0000e+000	1.0000e+000	0.0000e+000	0.0000e+000
24	0.0000e+000	0.0000e+000	0.0000e+000	0.0000e+000	0.0000e+000	0.0000e+000	1.0000e+000	0.0000e+000	0.0000e+000
25	0.0000e+000	0.0000e+000	0.0000e+000	0.0000e+000	0.0000e+000	0.0000e+000	1.0000e+000	0.0000e+000	0.0000e+000
26	0.0000e+000	0.0000e+000	0.0000e+000	0.0000e+000	0.0000e+000	0.0000e+000	1.0000e+000	0.0000e+000	0.0000e+000
27	0.0000e+000	0.0000e+000	0.0000e+000	0.0000e+000	0.0000e+000	0.0000e+000	1.0000e+000	0.0000e+000	0.0000e+000
28	0.0000e+000	0.0000e+000	0.0000e+000	0.0000e+000	0.0000e+000	0.0000e+000	1.0000e+000	0.0000e+000	0.0000e+000
29	0.0000e+000	0.0000e+000	0.0000e+000	0.0000e+000	0.0000e+000	0.0000e+000	1.0000e+000	0.0000e+000	0.0000e+000
30	0.0000e+000	0.0000e+000	0.0000e+000	0.0000e+000	0.0000e+000	0.0000e+000	1.0000e+000	0.0000e+000	0.0000e+000
31	0.0000e+000	0.0000e+000	0.0000e+000	0.0000e+000	0.0000e+000	0.0000e+000	1.0000e+000	0.0000e+000	0.0000e+000
SL#	Weight	Pore_Water	Alpha	Force Fn.	Seismic_F	Seismic_Y	Pore_Air	Phi_B	Liquified
1	3.5661e+001	2.2990e+001	-3.2305e+001	1.0000e+000	0.0000e+000	0.0000e+000	0.0000e+000	0.0000e+000	0
2	1.0128e+002	6.3301e+001	-2.9331e+001	1.0000e+000	0.0000e+000	0.0000e+000	0.0000e+000	0.0000e+000	0
3	1.5985e+002	9.7277e+001	-2.6442e+001	1.0000e+000	0.0000e+000	0.0000e+000	0.0000e+000	0.0000e+000	0
4	2.1191e+002	1.2603e+002	-2.3624e+001	1.0000e+000	0.0000e+000	0.0000e+000	0.0000e+000	0.0000e+000	0
5	2.5791e+002	1.5039e+002	-2.0866e+001	1.0000e+000	0.0000e+000	0.0000e+000	0.0000e+000	0.0000e+000	0
6	2.9818e+002	1.7099e+002	-1.8157e+001	1.0000e+000	0.0000e+000	0.0000e+000	0.0000e+000	0.0000e+000	0
7	3.1620e+002	1.7888e+002	-1.5598e+001	1.0000e+000	0.0000e+000	0.0000e+000	0.0000e+000	0.0000e+000	0
8	3.6497e+002	2.0424e+002	-1.3179e+001	1.0000e+000	0.0000e+000	0.0000e+000	0.0000e+000	0.0000e+000	0
9	4.0982e+002	2.2731e+002	-1.0784e+001	1.0000e+000	0.0000e+000	0.0000e+000	0.0000e+000	0.0000e+000	0
10	4.5087e+002	2.4833e+002	-8.4070e+000	1.0000e+000	0.0000e+000	0.0000e+000	0.0000e+000	0.0000e+000	0
11	4.8819e+002	2.6749e+002	-6.0450e+000	1.0000e+000	0.0000e+000	0.0000e+000	0.0000e+000	0.0000e+000	0
12	5.2951e+002	2.8895e+002	-3.6465e+000	1.0000e+000	0.0000e+000	0.0000e+000	0.0000e+000	0.0000e+000	0
13	5.3411e+002	2.9063e+002	-1.2073e+000	1.0000e+000	0.0000e+000	0.0000e+000	0.0000e+000	0.0000e+000	0
14	5.3466e+002	2.9062e+002	1.2296e+000	1.0000e+000	0.0000e+000	0.0000e+000	0.0000e+000	0.0000e+000	0
15	5.3114e+002	2.8892e+002	3.6687e+000	1.0000e+000	0.0000e+000	0.0000e+000	0.0000e+000	0.0000e+000	0
16	5.2354e+002	2.8551e+002	6.1146e+000	1.0000e+000	0.0000e+000	0.0000e+000	0.0000e+000	0.0000e+000	0
17	5.1180e+002	2.8032e+002	8.5717e+000	1.0000e+000	0.0000e+000	0.0000e+000	0.0000e+000	0.0000e+000	0
18	4.9587e+002	2.7326e+002	1.1045e+001	1.0000e+000	0.0000e+000	0.0000e+000	0.0000e+000	0.0000e+000	0
19	4.7565e+002	2.6421e+002	1.3539e+001	1.0000e+000	0.0000e+000	0.0000e+000	0.0000e+000	0.0000e+000	

21	4.2179e+002	2.3944e+002	1.8613e+001	1.0000e+000	0.0000e+000	0.0000e+000	0.0000e+000	0.0000e+000	0
22	3.8780e+002	2.2320e+002	2.1205e+001	1.0000e+000	0.0000e+000	0.0000e+000	0.0000e+000	0.0000e+000	0
23	3.4880e+002	2.0394e+002	2.3843e+001	1.0000e+000	0.0000e+000	0.0000e+000	0.0000e+000	0.0000e+000	0
24	3.8239e+002	2.0636e+002	2.6745e+001	1.0000e+000	0.0000e+000	0.0000e+000	0.0000e+000	0.0000e+000	0
25	3.8710e+002	1.6981e+002	2.9933e+001	1.0000e+000	0.0000e+000	0.0000e+000	0.0000e+000	0.0000e+000	0
26	3.8228e+002	1.2533e+002	3.3227e+001	1.0000e+000	0.0000e+000	0.0000e+000	0.0000e+000	0.0000e+000	0
27	2.6729e+002	6.0578e+001	3.6269e+001	1.0000e+000	0.0000e+000	0.0000e+000	0.0000e+000	0.0000e+000	0
28	2.0720e+002	2.0730e+001	3.9051e+001	1.0000e+000	0.0000e+000	0.0000e+000	0.0000e+000	0.0000e+000	0
29	5.3516e+001	0.0000e+000	4.0944e+001	1.0000e+000	0.0000e+000	0.0000e+000	0.0000e+000	0.0000e+000	0
30	9.6968e+001	0.0000e+000	4.3064e+001	1.0000e+000	0.0000e+000	0.0000e+000	0.0000e+000	0.0000e+000	0
31	2.0848e+000	0.0000e+000	4.4992e+001	1.0000e+000	0.0000e+000	0.0000e+000	0.0000e+000	0.0000e+000	0

Bishop Method Fm=		2.9434168		Applied Lambda=		0.0000			
SL#	Normal_M	ShearMob	Phi_Angle	Cohesion	SideLeft	ShearLeft	SideRight	ShearRight	
1	5.4403e+001	1.9314e+001	1.9600e+001	1.6000e+001	0.0000e+000	0.0000e+000	-4.7758e+001	0.0000e+000	
2	1.2910e+002	2.3000e+001	1.9600e+001	1.6000e+001	4.7758e+001	0.0000e+000	-1.3375e+002	0.0000e+000	
3	1.9148e+002	2.6040e+001	1.9600e+001	1.6000e+001	1.3375e+002	0.0000e+000	-2.4529e+002	0.0000e+000	
4	2.4379e+002	2.8558e+001	1.9600e+001	1.6000e+001	2.4529e+002	0.0000e+000	-3.7231e+002	0.0000e+000	
5	2.8769e+002	3.0642e+001	1.9600e+001	1.6000e+001	3.7231e+002	0.0000e+000	-5.0670e+002	0.0000e+000	
6	3.2442e+002	3.2361e+001	1.9600e+001	1.6000e+001	5.0670e+002	0.0000e+000	-6.4196e+002	0.0000e+000	
7	3.3712e+002	3.1640e+001	1.9600e+001	1.6000e+001	6.4196e+002	0.0000e+000	-7.6635e+002	0.0000e+000	
8	3.8279e+002	3.3962e+001	1.9600e+001	1.6000e+001	7.6635e+002	0.0000e+000	-8.9014e+002	0.0000e+000	
9	4.2405e+002	3.6053e+001	1.9600e+001	1.6000e+001	8.9014e+002	0.0000e+000	-1.0085e+003	0.0000e+000	
10	4.6137e+002	3.7939e+001	1.9600e+001	1.6000e+001	1.0085e+003	0.0000e+000	-1.1173e+003	0.0000e+000	
11	4.9512e+002	3.9641e+001	1.9600e+001	1.6000e+001	1.1173e+003	0.0000e+000	-1.2127e+003	0.0000e+000	
12	5.3327e+002	4.2099e+001	1.9600e+001	1.6000e+001	1.2127e+003	0.0000e+000	-1.2927e+003	0.0000e+000	
13	5.3512e+002	4.2097e+001	1.9600e+001	1.6000e+001	1.2927e+003	0.0000e+000	-1.3502e+003	0.0000e+000	
14	5.3388e+002	4.1948e+001	1.9600e+001	1.6000e+001	1.3502e+003	0.0000e+000	-1.3847e+003	0.0000e+000	
15	5.2956e+002	4.1654e+001	1.9600e+001	1.6000e+001	1.3847e+003	0.0000e+000	-1.3963e+003	0.0000e+000	
16	5.2212e+002	4.1213e+001	1.9600e+001	1.6000e+001	1.3963e+003	0.0000e+000	-1.3856e+003	0.0000e+000	
17	5.1146e+002	4.0622e+001	1.9600e+001	1.6000e+001	1.3856e+003	0.0000e+000	-1.3535e+003	0.0000e+000	
18	4.9745e+002	3.9875e+001	1.9600e+001	1.6000e+001	1.3535e+003	0.0000e+000	-1.3011e+003	0.0000e+000	
19	4.7986e+002	3.8963e+001	1.9600e+001	1.6000e+001	1.3011e+003	0.0000e+000	-1.2304e+003	0.0000e+000	
20	4.5842e+002	3.7875e+001	1.9600e+001	1.6000e+001	1.2304e+003	0.0000e+000	-1.1436e+003	0.0000e+000	
21	4.3274e+002	3.6593e+001	1.9600e+001	1.6000e+001	1.1436e+003	0.0000e+000	-1.0437e+003	0.0000e+000	
22	4.0234e+002	3.5099e+001	1.9600e+001	1.6000e+001	1.0437e+003	0.0000e+000	-9.3435e+002	0.0000e+000	
23	3.6660e+002	3.3364e+001	1.9600e+001	1.6000e+001	9.3435e+002	0.0000e+000	-8.1997e+002	0.0000e+000	
24	4.0779e+002	4.0501e+001	1.9600e+001	1.6000e+001	8.1997e+002	0.0000e+000	-6.7669e+002	0.0000e+000	
25	4.1970e+002	4.6856e+001	1.9600e+001	1.6000e+001	6.7669e+002	0.0000e+000	-5.1266e+002	0.0000e+000	
26	4.2220e+002	5.3136e+001	1.9600e+001	1.6000e+001	5.1266e+002	0.0000e+000	-3.3132e+002	0.0000e+000	
27	2.9998e+002	4.2989e+001	1.9600e+001	1.6000e+001	3.3132e+002	0.0000e+000	-1.9313e+002	0.0000e+000	
28	2.3406e+002	4.0371e+001	1.9600e+001	1.6000e+001	1.9313e+002	0.0000e+000	-8.1461e+001	0.0000e+000	
29	6.1240e+001	1.1076e+001	1.9600e+001	1.2000e+001	8.1461e+001	0.0000e+000	-5.0938e+001	0.0000e+000	
30	1.0861e+002	2.5807e+001	1.9600e+001	1.2000e+001	5.0938e+001	0.0000e+000	1.4005e+000	0.0000e+000	
31	6.7342e-001	2.2752e+000	1.9600e+001	1.2000e+001	-1.4005e+000	0.0000e+000	2.9088e-013	0.0000e+000	

Slip_Surface_Summary							
Analysis	Volume	Weight	Res_Moment	Act_Moment	Res_Force	Act_Force	FOS
Bishop Method	5.8996e+002	1.0619e+004	1.7112e+005	5.8135e+004			2.9434168

4B-3	"Sezione a" - Verifica globale argine-scavi	Sismiche	Golena	2.205
------	---	----------	--------	-------

	Center_X	Center_Y	Radius	Slip_Surface	Method						
	1.139076e+002	5.214790e+001	5.900654e+001	1078	1						
SL#	X_Left	Y_L_Top	Y_L_Bottom	X_Right	Y_R_Top	Y_R_Bottom	Mid_Height				
1	8.215693e+001	2.411924e+000	2.411924e+000	8.470880e+001	2.489434e+000	8.721528e-001	8.306209e-001				
2	8.470880e+001	2.489434e+000	8.721528e-001	8.726067e+001	2.566945e+000	-4.991616e-001	2.361880e+000				
3	8.726067e+001	2.566945e+000	-4.991616e-001	8.981253e+001	2.644456e+000	-1.714888e+000	3.731476e+000				
4	8.981253e+001	2.644456e+000	-1.714888e+000	9.236440e+001	2.721967e+000	-2.785356e+000	4.950928e+000				
5	9.236440e+001	2.721967e+000	-2.785356e+000	9.491627e+001	2.799478e+000	-3.718918e+000	6.029517e+000				
6	9.491627e+001	2.799478e+000	-3.718918e+000	9.746813e+001	2.876989e+000	-4.522339e+000	6.974760e+000				
7	9.746813e+001	2.876989e+000	-4.522339e+000	1.000200e+002	2.954500e+000	-5.201090e+000	7.792746e+000				
8	1.000200e+002	2.954500e+000	-5.201090e+000	1.022340e+002	3.610320e+000	-5.692390e+000	8.740311e+000				
9	1.022340e+002	3.610320e+000	-5.692390e+000	1.044480e+002	4.266140e+000	-6.095452e+000	9.843056e+000				
10	1.044480e+002	4.266140e+000	-6.095452e+000	1.066620e+002	4.921960e+000	-6.412098e+000	1.085853e+001				
11	1.066620e+002	4.921960e+000	-6.412098e+000	1.088760e+002	5.577780e+000	-6.643724e+000	1.178834e+001				
12	1.088760e+002	5.577780e+000	-6.643724e+000	1.110900e+002	6.233600e+000	-6.791332e+000	1.263367e+001				
13	1.110900e+002	6.233600e+000	-6.791333e+000	1.136018e+002	6.248400e+000	-6.857850e+000	1.307897e+001				
14	1.136018e+002	6.248400e+000	-6.857850e+000	1.161136e+002	6.263200e+000	-6.817391e+000	1.310679e+001				
15	1.161136e+002	6.263200e+000	-6.817391e+000	1.186255e+002	6.278000e+000	-6.669733e+000	1.302760e+001				
16	1.186255e+002	6.278000e+000	-6.669733e+000	1.211373e+002	6.292800e+000	-6.414066e+000	1.284087e+001				
17	1.211373e+002	6.292800e+000	-6.414066e+000	1.236491e+002	6.307600e+000	-6.048968e+000	1.254551e+001				
18	1.236491e+002	6.307600e+000	-6.048968e+000	1.261609e+002	6.322400e+000	-5.572361e+000	1.213976e+001				
19	1.261609e+002	6.322400e+000	-5.572361e+000	1.286727e+002	6.337200e+000	-4.981454e+000	1.162120e+001				
20	1.286727e+002	6.337200e+000	-4.981454e+000	1.311845e+002	6.352000e+000	-4.272657e+000	1.098665e+001				
21	1.311845e+002	6.352000e+000	-4.272657e+000	1.336964e+002	6.366800e+000	-3.441460e+000	1.023208e+001				
22	1.336964e+002	6.366800e+000	-3.441460e+000	1.362082e+002	6.381600e+000	-2.482276e+000	9.352463e+000				
23	1.362082e+002	6.381600e+000	-2.482276e+000	1.387200e+002	6.396400e+000	-1.388227e+000	8.341597e+000				
24	1.387200e+002	6.396400e+000	-1.388227e+000	1.413700e+002	7.923600e+000	-7.842166e-002	7.913975e+000				
25	1.413700e+002	7.923600e+000	-7.842166e-002	1.440200e+002	9.450800e+000	1.403290e+000	8.047141e+000				
26	1.440200e+002	9.450800e+000	1.403290e+000	1.466700e+002	1.097800e+001	3.072476e+000	8.001077e+000				
27	1.466700e+002	1.097800e+001	3.072476e+000	1.488651e+002	1.097800e+001	4.611088e+000	7.154808e+000				
28	1.488651e+002	1.097800e+001	4.611088e+000	1.510601e+002	1.097800e+001	6.306181e+000	5.539953e+000				
29	1.510601e+002	1.097800e+001	6.306181e+000	1.515100e+002	1.097800e+001	6.674484e+000	4.488593e+000				
30	1.515100e+002	1.097800e+001	6.674484e+000	1.541491e+002	9.407803e+000	8.992454e+000	2.394221e+000				
31	1.541491e+002	9.407803e+000	8.992454e+000	1.544200e+002	9.246639e+000	9.246629e+000	2.080753e-001				
SL#	L_Load_X	L_Load_Y	A_Load_X	A_Load_Y	P_Load_X	P_Load_Y	A_Modifier	AS_Load_X	AS_Load_Y		
1	0.0000e+000	0.0000e+000	0.0000e+000	0.0000e+000	0.0000e+000	0.0000e+000	1.0000e+000	0.0000e+000	0.0000e+000		
2	0.0000e+000	0.0000e+000	0.0000e+000	0.0000e+000	0.0000e+000	0.0000e+000	1.0000e+000	0.0000e+000	0.0000e+000		
3	0.0000e+000	0.0000e+000	0.0000e+000	0.0000e+000	0.0000e+000	0.0000e+000	1.0000e+000	0.0000e+000	0.0000e+000		
4	0.0000e+000	0.0000e+000	0.0000e+000	0.0000e+000	0.0000e+000	0.0000e+000	1.0000e+000	0.0000e+000	0.0000e+000		
5	0.0000e+000	0.0000e+000	0.0000e+000	0.0000e+000	0.0000e+000	0.0000e+000	1.0000e+000	0.0000e+000	0.0000e+000		
6	0.0000e+000	0.0000e+000	0.0000e+000	0.0000e+000	0.0000e+000	0.0000e+000	1.0000e+000	0.0000e+000	0.0000e+000		
7	0.0000e+000	0.0000e+000	0.0000e+000	0.0000e+000	0.0000e+000	0.0000e+000	1.0000e+000	0.0000e+000	0.0000e+000		
8	0.0000e+000	0.0000e+000	0.0000e+000	0.0000e+000	0.0000e+000	0.0000e+000	1.0000e+000	0.0000e+000	0.0000e+000		
9	0.0000e+000	0.0000e+000	0.0000e+000	0.0000e+000	0.0000e+000	0.0000e+000	1.0000e+000	0.0000e+000	0.0000e+000		
10	0.0000e+000	0.0000e+000	0.0000e+000	0.0000e+000	0.0000e+000	0.0000e+000	1.0000e+000	0.0000e+000	0.0000e+000		
11	0.0000e+000	0.0000e+000	0.0000e+000	0.0000e+000	0.0000e+000	0.0000e+000	1.0000e+000	0.0000e+000	0.0000e+000		
12	0.0000e+000	0.0000e+000	0.0000e+000	0.0000e+000	0.0000e+000	0.0000e+000	1.0000e+000	0.0000e+000	0.0000e+000		
13	0.0000e+000	0.0000e+000	0.0000e+000	0.0000e+000	0.0000e+000	0.0000e+000	1.0000e+000	0.0000e+000	0.0000e+000		
14	0.0000e+000	0.0000e+000	0.0000e+000	0.0000e+000	0.0000e+000	0.0000e+000	1.0000e+000	0.0000e+000	0.0000e+000		
15	0.0000e+000	0.0000e+000	0.0000e+000	0.0000e+000	0.0000e+000	0.0000e+000	1.0000e+000	0.0000e+000	0.0000e+000		
16	0.0000e+000	0.0000e+000	0.0000e+000	0.0000e+000	0.0000e+000	0.0000e+000	1.0000e+000	0.0000e+000	0.0000e+000		
17	0.0000e+000	0.0000e+000	0.0000e+000	0.0000e+000	0.0000e+000	0.0000e+000	1.0000e+000	0.0000e+000	0.0000e+000		
18	0.0000e+000	0.0000e+000	0.0000e+000	0.0000e+000	0.0000e+000	0.0000e+000	1.0000e+000	0.0000e+000	0.0000e+000		
19	0.0000e+000	0.0000e+000	0.0000e+000	0.0000e+000	0.0000e+000	0.0000e+000	1.0000e+000	0.0000e+000	0.0000e+000		
20	0.0000e+000	0.0000e+000	0.0000e+000	0.0000e+000	0.0000e+000	0.0000e+000	1.0000e+000	0.0000e+000	0.0000e+000		
21	0.0000e+000	0.0000e+000	0.0000e+000	0.0000e+000	0.0000e+000	0.0000e+000	1.0000e+000	0.0000e+000	0.0000e+000		
22	0.0000e+000	0.0000e+000	0.0000e+000	0.0000e+000	0.0000e+000	0.0000e+000	1.0000e+000	0.0000e+000	0.0000e+000		
23	0.0000e+000	0.0000e+000	0.0000e+000	0.0000e+000	0.0000e+000	0.0000e+000	1.0000e+000	0.0000e+000	0.0000e+000		
24	0.0000e+000	0.0000e+000	0.0000e+000	0.0000e+000	0.0000e+000	0.0000e+000	1.0000e+000	0.0000e+000	0.0000e+000		
25	0.0000e+000	0.0000e+000	0.0000e+000	0.0000e+000	0.0000e+000	0.0000e+000	1.0000e+000	0.0000e+000	0.0000e+000		
26	0.0000e+000	0.0000e+000	0.0000e+000	0.0000e+000	0.0000e+000	0.0000e+000	1.0000e+000	0.0000e+000	0.0000e+000		
27	0.0000e+000	0.0000e+000	0.0000e+000	0.0000e+000	0.0000e+000	0.0000e+000	1.0000e+000	0.0000e+000	0.0000e+000		
28	0.0000e+000	0.0000e+000	0.0000e+000	0.0000e+000	0.0000e+000	0.0000e+000	1.0000e+000	0.0000e+000	0.0000e+000		
29	0.0000e+000	0.0000e+000	0.0000e+000	0.0000e+000	0.0000e+000	0.0000e+000	1.0000e+000	0.0000e+000	0.0000e+000		
30	0.0000e+000	0.0000e+000	0.0000e+000	0.0000e+000	0.0000e+000	0.0000e+000	1.0000e+000	0.0000e+000	0.0000e+000		
31	0.0000e+000	0.0000e+000	0.0000e+000	0.0000e+000	0.0000e+000	0.0000e+000	1.0000e+000	0.0000e+000	0.0000e+000		
SL#	Weight	Pore_Water	Alpha	Force Fn.	Seismic_F	Seismic_Y	Pore_Air	Phi_B	Liquified		
1	3.8916e+001	2.4281e+001	-3.1106e+001	1.0000e+000	-1.5261e+000	2.0354e+000	0.0000e+000	0.0000e+000	0		
2	1.1066e+002	6.7109e+001	-2.8253e+001	1.0000e+000	-4.3396e+000	1.3473e+000	0.0000e+000	0.0000e+000	0		
3	1.7483e+002	1.0345e+002	-2.5473e+001	1.0000e+000	-6.8560e+000	7.3996e-001	0.0000e+000	0.0000e+000	0		
4	2.3196e+002	1.3437e+002	-2.2757e+001	1.0000e+000	-9.0966e+000	2.0775e-001	0.0000e+000	0.0000e+000	0		
5	2.8250e+002	1.6069e+002	-2.0094e+001	1.0000e+000	-1.1078e+001	-2.5404e-001	0.0000e+000	0.0000e+000	0		
6	3.2678e+002	1.8301e+002	-1.7476e+001	1.0000e+000	-1.2815e+001	-6.4915e-001	0.0000e+000	0.0000e+000	0		
7	3.6511e+002	2.1882e+002	-1.4895e+001	1.0000e+000	-1.4318e+001	-9.8063e-001	0.0000e+000	0.0000e+000	0		
8	3.5529e+002	1.9440e+002	-1.2512e+001	1.0000e+000	-1.3933e+001	-1.0877e+000	0.0000e+000	0.0000e+000	0		
9	4.0011e+002	2.1725e+002	-1.0318e+001	1.0000e+000	-1.5691e+001	-9.8330e-001	0.0000e+000	0.0000e+000	0		
10	4.4139e+002	2.3818e+002	-8.1392e+000	1.0000e+000	-1.7309e+001	-8.3522e-001	0.0000e+000	0.0000e+000	0		
11	4.7918e+002	2.5737e+002	-5.9725e+000	1.0000e+000	-1.8792e+001	-6.4430e-001	0.0000e+000	0.0000e+000	0		
12	5.1355e+002	2.7494e+002	-3.8143e+000	1.0000e+000	-2.0139e+001	-4.1115e-001	0.0000e+000	0.0000e+000	0		
13	6.0316e+002	3.2213e+002	-1.5169e+000	1.0000e+000	-2.3653e+001	-2.9849e-001	0.0000e+000	0.0000e+000	0		
14	6.04										

22	4.3131e+002	2.4292e+002	2.0900e+001	1.0000e+000	-1.6914e+001	1.6980e+000	0.0000e+000	0.0000e+000	0
23	3.8469e+002	2.1997e+002	2.3536e+001	1.0000e+000	-1.5086e+001	2.2182e+000	0.0000e+000	0.0000e+000	0
24	3.8505e+002	2.0259e+002	2.6302e+001	1.0000e+000	-1.5100e+001	3.2030e+000	0.0000e+000	0.0000e+000	0
25	3.9153e+002	1.6657e+002	2.9211e+001	1.0000e+000	-1.5354e+001	4.6636e+000	0.0000e+000	0.0000e+000	0
26	3.8928e+002	1.2349e+002	3.2206e+001	1.0000e+000	-1.5266e+001	6.2139e+000	0.0000e+000	0.0000e+000	0
27	2.8835e+002	6.3372e+001	3.5028e+001	1.0000e+000	-1.1308e+001	7.4006e+000	0.0000e+000	0.0000e+000	0
28	2.2327e+002	2.1640e+001	3.7676e+001	1.0000e+000	-8.7556e+000	8.2080e+000	0.0000e+000	0.0000e+000	0
29	3.7076e+001	0.0000e+000	3.9305e+001	1.0000e+000	-1.4540e+000	8.7337e+000	0.0000e+000	0.0000e+000	0
30	1.1601e+002	0.0000e+000	4.1293e+001	1.0000e+000	-4.5494e+000	8.9958e+000	0.0000e+000	0.0000e+000	0
31	1.0348e+000	0.0000e+000	4.3178e+001	1.0000e+000	-4.0581e-002	9.2232e+000	0.0000e+000	0.0000e+000	0

Bishop_Method_Fm= 2.2047676		Applied_Lambda= 0.0000							
SL#	Normal_M	ShearMob	Phi_Angle	Cohesion	SideLeft	ShearLeft	SideRight	ShearRight	
1	6.2199e+001	2.7755e+001	1.9600e+001	1.6000e+001	0.0000e+000	0.0000e+000	-5.7576e+001	0.0000e+000	
2	1.4356e+002	3.3373e+001	1.9600e+001	1.6000e+001	5.7576e+001	0.0000e+000	-1.5424e+002	0.0000e+000	
3	2.1176e+002	3.8008e+001	1.9600e+001	1.6000e+001	1.5424e+002	0.0000e+000	-2.7675e+002	0.0000e+000	
4	2.6910e+002	4.1843e+001	1.9600e+001	1.6000e+001	2.7675e+002	0.0000e+000	-4.1453e+002	0.0000e+000	
5	3.1727e+002	4.5010e+001	1.9600e+001	1.6000e+001	4.1453e+002	0.0000e+000	-5.5908e+002	0.0000e+000	
6	3.5759e+002	4.7611e+001	1.9600e+001	1.6000e+001	5.5908e+002	0.0000e+000	-7.0351e+002	0.0000e+000	
7	3.9103e+002	4.9723e+001	1.9600e+001	1.6000e+001	7.0351e+002	0.0000e+000	-8.4227e+002	0.0000e+000	
8	3.7402e+002	4.5467e+001	1.9600e+001	1.6000e+001	8.4227e+002	0.0000e+000	-9.5777e+002	0.0000e+000	
9	4.1549e+002	4.8350e+001	1.9600e+001	1.6000e+001	9.5777e+002	0.0000e+000	-1.0683e+003	0.0000e+000	
10	4.5317e+002	5.0953e+001	1.9600e+001	1.6000e+001	1.0683e+003	0.0000e+000	-1.1699e+003	0.0000e+000	
11	4.8738e+002	5.3303e+001	1.9600e+001	1.6000e+001	1.1699e+003	0.0000e+000	-1.2593e+003	0.0000e+000	
12	5.1838e+002	5.5422e+001	1.9600e+001	1.6000e+001	1.2593e+003	0.0000e+000	-1.3335e+003	0.0000e+000	
13	6.0507e+002	6.3931e+001	1.9600e+001	1.6000e+001	1.3335e+003	0.0000e+000	-1.3951e+003	0.0000e+000	
14	6.0350e+002	6.3634e+001	1.9600e+001	1.6000e+001	1.3951e+003	0.0000e+000	-1.4304e+003	0.0000e+000	
15	5.9812e+002	6.3086e+001	1.9600e+001	1.6000e+001	1.4304e+003	0.0000e+000	-1.4398e+003	0.0000e+000	
16	5.8890e+002	6.2288e+001	1.9600e+001	1.6000e+001	1.4398e+003	0.0000e+000	-1.4239e+003	0.0000e+000	
17	5.7574e+002	6.1235e+001	1.9600e+001	1.6000e+001	1.4239e+003	0.0000e+000	-1.3839e+003	0.0000e+000	
18	5.5847e+002	5.9918e+001	1.9600e+001	1.6000e+001	1.3839e+003	0.0000e+000	-1.3215e+003	0.0000e+000	
19	5.3684e+002	5.8324e+001	1.9600e+001	1.6000e+001	1.3215e+003	0.0000e+000	-1.2391e+003	0.0000e+000	
20	5.1053e+002	5.6434e+001	1.9600e+001	1.6000e+001	1.2391e+003	0.0000e+000	-1.1394e+003	0.0000e+000	
21	4.7909e+002	5.4224e+001	1.9600e+001	1.6000e+001	1.1394e+003	0.0000e+000	-1.0263e+003	0.0000e+000	
22	4.4196e+002	5.1659e+001	1.9600e+001	1.6000e+001	1.0263e+003	0.0000e+000	-9.0432e+002	0.0000e+000	
23	3.9838e+002	4.8699e+001	1.9600e+001	1.6000e+001	9.0432e+002	0.0000e+000	-7.7891e+002	0.0000e+000	
24	4.0292e+002	5.3808e+001	1.9600e+001	1.6000e+001	7.7891e+002	0.0000e+000	-6.3815e+002	0.0000e+000	
25	4.1391e+002	6.1984e+001	1.9600e+001	1.6000e+001	6.3815e+002	0.0000e+000	-4.8038e+002	0.0000e+000	
26	4.1600e+002	6.9972e+001	1.9600e+001	1.6000e+001	4.8038e+002	0.0000e+000	-3.0897e+002	0.0000e+000	
27	3.1051e+002	5.9370e+001	1.9600e+001	1.6000e+001	3.0897e+002	0.0000e+000	-1.7363e+002	0.0000e+000	
28	2.3939e+002	5.5296e+001	1.9600e+001	1.6000e+001	1.7363e+002	0.0000e+000	-6.7687e+001	0.0000e+000	
29	4.0032e+001	9.6299e+000	1.9600e+001	1.2000e+001	6.7687e+001	0.0000e+000	-4.9281e+001	0.0000e+000	
30	1.2051e+002	3.8585e+001	1.9600e+001	1.2000e+001	4.9281e+001	0.0000e+000	1.8738e+000	0.0000e+000	
31	-4.1511e-001	1.9547e+000	1.9600e+001	1.2000e+001	-1.8738e+000	0.0000e+000	-4.8606e-013	0.0000e+000	

Slip_Surface_Summary							
Analysis	Volume	Weight	Res_Moment	Act_Moment	Res_Force	Act_Force	FOS
Bishop Method	6.2208e+002	1.1197e+004	1.9916e+005	9.0330e+004			2.2047676